

GIANT-VAC[®]

Municipal

ASSEMBLY INSTRUCTIONS
SAFETY RULES
PARTS LIST

Self-Contained Truck Loaders



Actual product differs from product pictured above

Models covered:
35BVGB-TR10

Revised Oct 09

Janiak Manufacturing, Inc.

Designer of the Original Giant-Vac®

GIANT-VAC Municipal

South Windham, CT 06266
Phone: 860-423-7741 • Fax: 860-423-2654

ASSEMBLY AND OPERATION INSTRUCTIONS FOR

GIANT-VAC™ MODEL 35BVGB-TR10

Congratulations!

You have just purchased one of the finest pieces of outdoor power equipment on the market today. If properly cared for, your Giant-Vac Model 35BVGB-TR10 Self-Contained Truck Loader will provide years of dependable service. Please read and follow this instruction manual carefully in order to get the most out of your new equipment.

First, inspect your machine upon delivery. Each Giant-Vac product leaves our factory in excellent condition; occasionally, however, some damage may occur during shipment. If any such damage is found upon initial inspection, *immediately* notify the transport carrier who delivered your machine, as they are solely responsible for the damage as well as any subsequent adjustments.

Your Giant-Vac Model 35BVGB-TR10 Self-Contained Truck Loader comes completely assembled. Simply follow the instructions contained within this manual to begin enjoying the benefits of your new unit.

CALIFORNIA PROPOSITION 65 WARNING

Gasoline and Diesel engine exhaust and some of its constituents are known to the State of California to cause cancer, birth defects and other reproductive harm.

As an owner of off-road gasoline or diesel engine equipment and/or as an employer, you also may have an obligation under the California Occupational Safety and Health Act or under Proposition 65 to warn persons exposed to gas and diesel engine exhaust and/or other Proposition 65 chemicals in and around your workplace. See California Health and Safety Code section 25249.5, Title 22 of the California Code of Regulations at Section 1200 *et seq.*, and Title 8 of the California Code of Regulations Section 5194.

1

SAFETY RULES REGARDING OUTDOOR POWER EQUIPMENT

IMPORTANT! READ THE FOLLOWING SAFETY RULES CAREFULLY BEFORE OPERATING UNIT:

- Regard your Giant-Vac Model 3510TR Self-Contained Truck Loader as a piece of power equipment and teach this regard to all who will operate this unit. Never allow children or young teenagers to operate the unit.
- Always wear appropriate safety equipment when operating this unit. Proper eye, ear, and breathing protection are a must.
- Be sure you know how to stop both the unit and the engine at a **MOMENT'S NOTICE**. Refer to the operation section of this manual, as well as the engine manual.
- Do not operate with any guards or component parts removed from unit.
- Unless there is very good artificial light, use only during daylight.
- Fill gasoline driven machines outdoors. Avoid spilling gasoline and **DO NOT** fill the engine while it is running or while you are smoking.
- While in operation, keep all parts of body away from intake and exhaust sections. Never insert any body part or other foreign object in any opening while the machine is running.
- Never operate the unit with the back door open or unlocked.
- When operating unit, keep people and pets a safe distance away. Instruct children to keep away from the area of operation at all times.
- Do not use on steep inclines (over 30 degrees), as unit can roll over.
- Before making any adjustments or repairs, stop engine and remove spark plug wire.
- Never allow another person to ride, sit or stand on the Giant-Vac Truck Loader.

FAILURE TO FOLLOW THESE RULES CAN RESULT IN CHRONIC HEALTH PROBLEMS, SERIOUS INJURY, OR EVEN DEATH.

2

UNIT OPERATION

1. ASSEMBLY:

The boom holders are located on the side of the exhaust stack and elbow (ref #34). Next the boom should be installed in the holders by sliding the vertical arm into the upper bracket on the exhaust stack and elbow and then dropping down into the lower bracket. The outrigger arm is next installed and fastened with a ½" bolt and lock nuts. The threaded support spring arm is fastened which completes this assembly.

2. HOSE ASSEMBLY AND POSITIONING:

Install the hose next and secure to the flange by means of a stainless steel hose clamp. Then slip the boom hose support over the hose. This should be secured about two (2) feet from the end of the hose. The pickup nozzle is installed next and fastened with a second hose clamp.

A chain connects the hose support band to the end of the boom. It is vitally important that this chain is adjusted correctly for ease of operation. In general, the chain should be so adjusted that the nozzle is approximately 16 inches off the ground.

The ultimate check to be certain this adjustment is correct takes place after the machine is running at operating speed. To make this check, speed up the engine. You should then be able to push the nozzle to the ground and pull it back up by using three fingers of one hand. If you cannot operate the nozzle accordingly, either the chain should be readjusted or the spring tension of the boom assembly changed. Taking a few minutes to adjust this correctly will ensure ease in operation.

For transport, move the intake hose forward and lock the intake nozzle handle to the nozzle holder for transport.

Attach the spring holders to the rear door (facing out or to the back of the machine) with 3/8" bolt, nut and lock washer. Next, connect the door spring and chain from the spring holder to the chain holder on the top of the machine. Repeat for the other side.

3. Engine:

NOTE: *If you experience problems with your engine that cannot be satisfactorily resolved by following the instructions contained within the engine manual, contact your local engine dealer, or call the toll-free service number listed in the repair section of the engine manual. All engine service, warranty or otherwise, is required to be performed by a manufacturer-authorized service center. Giant-Vac Mfg., Inc. is neither authorized nor responsible for any type of warranty engine service, nor is it equipped to perform any such service.*

BEFORE STARTING ENGINE:

- Be sure to read your engine manual carefully and thoroughly before attempting to start the engine.
- Be sure that the unit is **completely** assembled, and all safety guards and components are in place.
- Be sure to check engine's **oil** and **gasoline***. (See engine manual for recommended oil and gasoline specifications.) **Never** check the engine while it is running or while you are smoking. Check only when engine is cold.

*All machines are shipped without oil or gasoline unless otherwise noted.

- Be sure that red fuel valve on engine is set to open position.

TO START ENGINE:

- Set throttle control up to "full" position. If engine is cold, set choke by pulling out choke handle.
- Turn ignition key and hold until engine starts. (If engine fails to start within a reasonable amount of time, discontinue and check engine manual for further instructions.)
- After engine starts, release ignition key, move throttle control down to approximately half, and turn off choke as required.

TO SHUT ENGINE DOWN:

- Allow engine to idle for 2-3 minutes before shutting down.
- Turn ignition key to 'off' position.
- If engine is not to be started for a prolonged period, turn red fuel valve to closed position.

4. OPERATING THE UNIT:

1. **NOTE: ENGINE IS SHIPPED WITHOUT OIL** Follow the engine manufacturers recommendations for oil and fuel recommendations and service. This should be read carefully to ensure maximum engine life.
2. Be certain the intake hose boom is properly adjusted according to the instructions found in an earlier section of this manual. In operation, you will note the boom will readily swing over a 10-foot path. If the pile of leaves is high, a short back and forth flicking motion will effectively eat into the pile of leaves. If the leaves are wet, it is best to move into the pile with a "gulping" motion. In this way, you will pick up a quantity and then move the hose slightly away from the pile to allow the leaves to rapidly flush through.

3. In most cases, if the leaves are dry, we recommend running the truck loader at approximately half throttle. This will help reduce small particles of debris from escaping through the exhaust screen. When the leaves are wet or partially frozen, we recommend running the machine at full throttle.
4. **NEVER USE YOUR GIANT-VAC TRUCK LOADER TO PICK UP SAND OR STONES.** Debris like this is very abrasive and can damage the impeller and blower housing.
5. When the receiver box is full, stop the engine and move the intake hose nozzle forward and lock for transport. The machine is now ready to go to the dump.
6. Never run or operate your Giant-Vac Truck Loader unless it is completely connected to the receiver box and the intake hose is installed.

DUMPING THE LEAF BOX:

Your Giant-Vac Model 2510TR/3010TR Self-Contained Truck Loader has a 10 cubic yard* self-dumping leaf box. When the box is full, simply back the unit up to the desired dumping area **, loosen the two handle nuts on either side of the back door, swing the two pivot lock bolts out of the way, lift the spring-loaded back door, and the debris will slide out. If necessary, pull the unit forward a few feet to ensure complete emptying of the box. Be sure to close and lock the door before resuming operation.

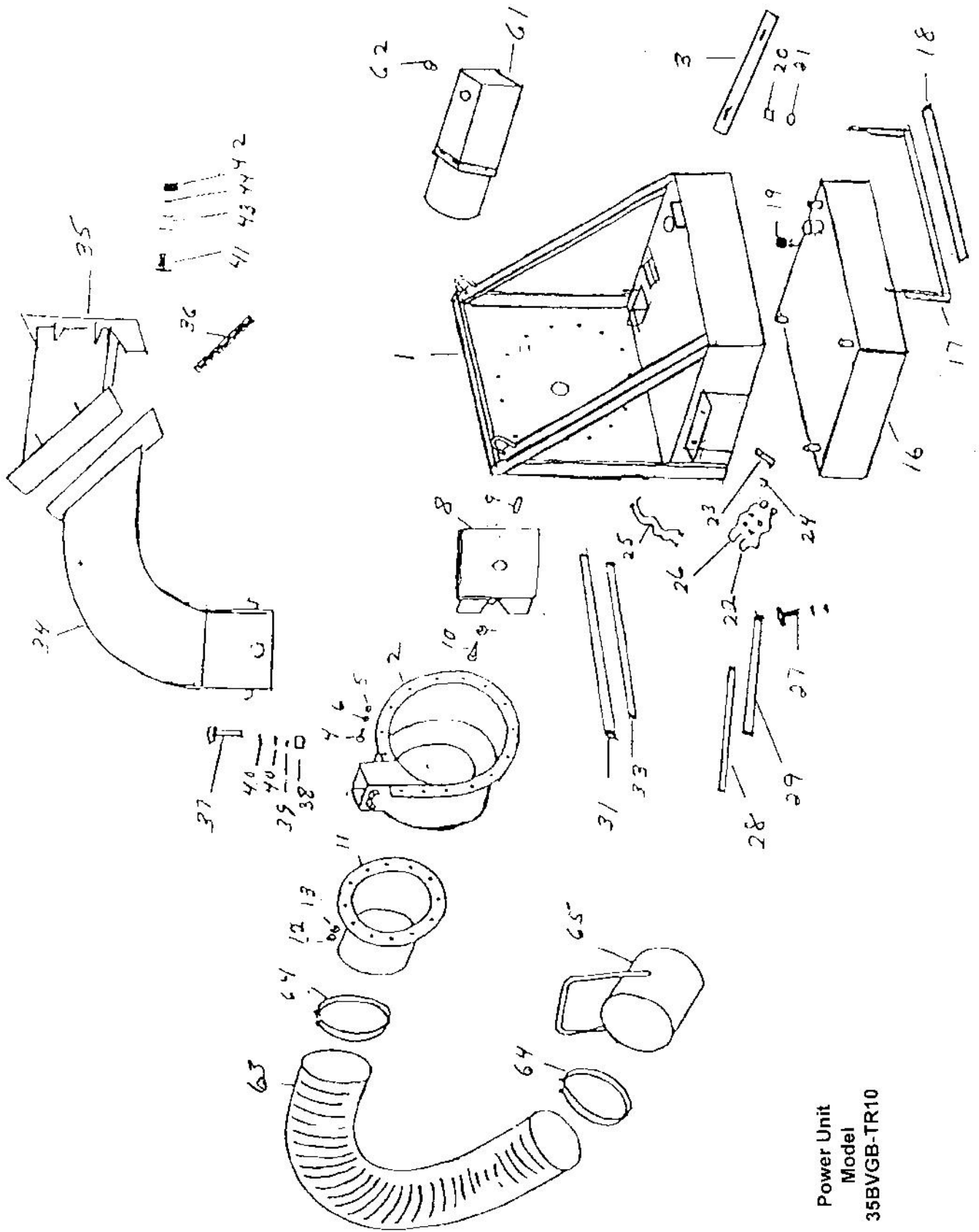
* Approximate holding capacity

** **Before backing up, always make a visual assessment of the area behind the Trail-Vac, making sure there are no people (especially children) or objects behind the machine that could be backed into or run over. Failure to do so could result in serious injury, as well as severe machine and/or property damage.**

3

MAINTENANCE AND STORAGE

- Follow **implicitly** the engine manufacturer's recommendations for maintenance.
 - Never make any adjustments to the Truck Loader until the engine is **off** and the spark plug wire is disconnected.
 - If carburetor adjustment is necessary, stand to one side and **keep feet and hands** in the clear while making adjustments.
 - Keep engine free of accumulations of grass, leaves or excessive grease. An accumulation of these combustible materials may result in a fire.
 - Store gasoline in a **safe and approved** container in a cool dry place.
 - Keep the Trail-Vac and fuel container in locked storage to prevent children from playing and/or tampering with them.
 - Do not store gasoline powered equipment or fuel containers in a basement or any closed area where heating or heat appliances or open pilot lights are present, unless the fuel is completely drained from the power equipment and the fuel containers.
-



Power Unit
 Model
 35BVGB-TR10

POWER UNIT

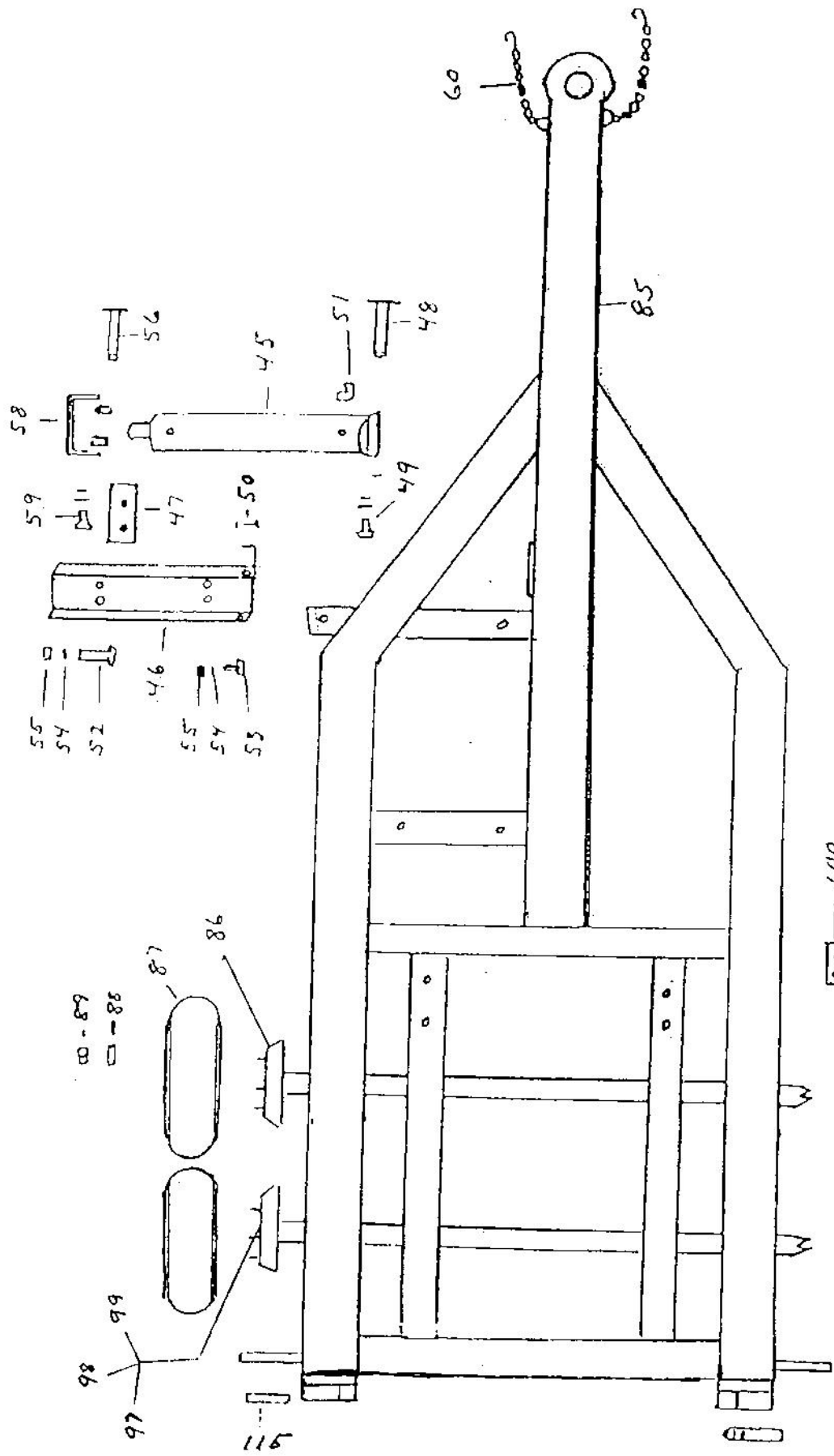
<u>REF. NO.</u>	<u>PART NO.</u>	<u>DESCRIPTION</u>	<u>35BVGB-TR10</u>
1	10259	Loader Base	1
1a	31740	1/2-13 x 2 Hex Bolt	4
1b	31043	1/2 Flat Washer	8
1c	31489	5/8 Flat Washer	8
1d	31078	1/2 Lock Washer	4
1e	31406	1/2 Lock Nut	4
2	10220	Blower Housing	1
4	31033	3/8-16 x Hex Bolt	13
5	31008	3/8 Lock Washer	13
6	31009	3/8-16 Hex Nut	13
8	21518	Impeller	1
9,10	31127	Impeller Key	1
9,10	31326	5/8 Lock Washer	1
9,10	31327	5/8 x 2 Impeller Bolt	1
11	20159	Intake Flange 16"	1
12	31022	1/2 Hex Nut	12
13	31078	1/2 Lock Washer	12
16	40185	Fuel Tank (2009 EPA)	1
17	31157	Fuel Tank Strap	2
19	40173	Fuel Cap (2009 EPA)	1
22	61044	Valve Assembly	1
23	23165	Valve Handle	2
24	27199	Valve Handle Holder	2
25	31518	Wire Set Hydraulic Valve	1
26	31519	Replacement Micro Switch for Valve Assembly	2
27	31195	1/4-20 x 1-1/4 Hex Bolt (Valve Assembly Mount)	3
27a	31013	1/4 Lock Washer	3
27b	31030	1/4-20 Hex Nut	3
28	61045	Hydraulic Hose 1/2 x 23 Valve to Jack	1
29	61046	Hydraulic Hose 1/2 x 43 Valve to Jack	1
30	61073	Hydraulic Fitting 2501LL-8-8	1
31	61048	Hydraulic Hose 1/2 x 63 Valve to Hydraulic Power Unit	1
32	61077	Hydraulic Fitting 2501-8-8	1
32a	61078	Hydraulic Fitting 2404-8-8	1
33	61050	Hydraulic Hose 1/2 x 49 Valve to Hydraulic Power Unit	1
34	24635	Stack & Elbow Assembly (With Wear Liner)	1
35	24637	Discharge Stack - Leaf Box Side	1
36	31532	Discharge Stack Gasket Set	1
37	31086	1/2-13 x 1-3/4 Hex Bolt	12
38	31022	1/2 Hex Nut	12
39	31078	1/2 Lock Washer	12
40	31043	1/2 Flat Washer	24
41	31097	3/8-16 x 1-1/4 Hex Bolt	8
42	31009	3/8-16 Hex Nut	8
43	31034	3/8 Flat Washer	16
44	31008	3/8 Lock Washer	8
45	61017	Hydraulic Cycliner 24"	1
46	27196	Cylinder Mounting Bracket	1
47	27197	Cylinder Clamp Bracket	1
48	31522	Cylinder Top Mounting Pin 1-1/4 x 7	1

POWER UNIT (cont'd)

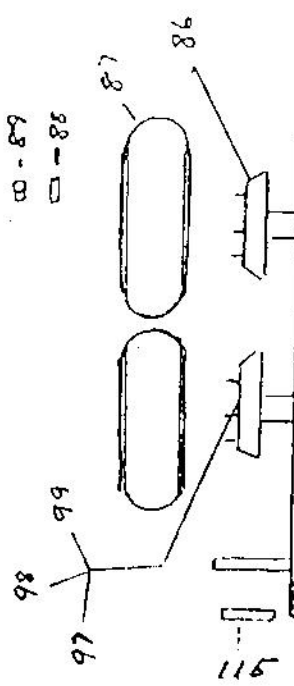
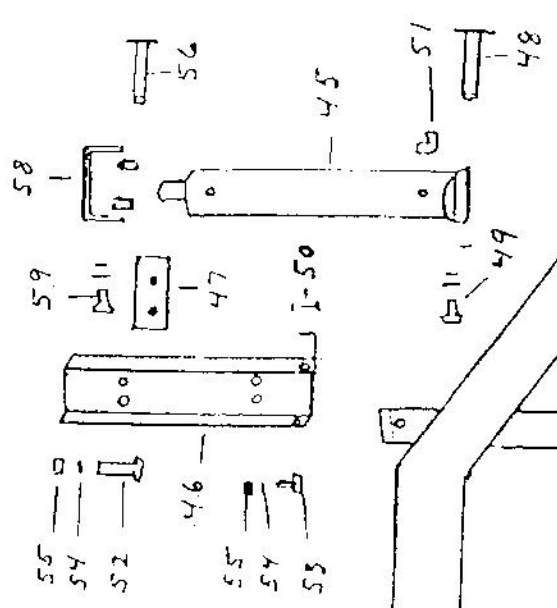
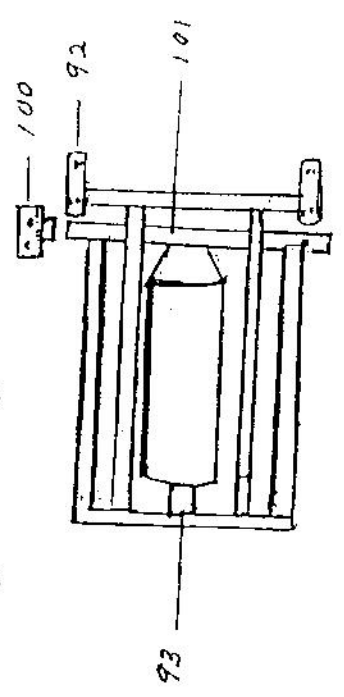
<u>REF. NO.</u>	<u>PART NO.</u>	<u>DESCRIPTION</u>	<u>35BVGB-TR10</u>
48a	31835	1-1/4 x 3/4 Spacer	2
49	31523	1/2-13 x 1-1/4 Group	1
49a	31489	5/8 Flat Washer	1
50	31524	3/8 x 2 Clevis Pin & Bridge Pin	1
51	61074	Hydraulic Fitting 2501-6-8	1
52	31525	1/2-13 x 5-1/2 Hex Bolt (Clamp Bolt)	2
52a	31078	1/2 Lock Washer	2
53	31833	5/8-11 x 1-1/2 Hex Bolt	4
54	31834	5/8 Flat Washer (D-Shape)	4
54a	31326	5/8 Lock Washer	4
55	31528	5/8-11 Hex Nut	4
56	31529	Jack Foot Pin 1-1/4 x 5	1
58	27198	Jack Foot	1
59	31523	1/2-13 x 1-1/4 Group	2
59a	31489	5/8 Flat Washer	2
60	33135	Safety Chain (Set of 2)	1
61	61079	Hydraulic Power Unit	1
61a	31492	3/8-16 x 3/4 Hex Bolt (Power Unit Mounting Bolt)	2
61b	31033	3/8-16 x 1 Hex Bolt (Power Unit Mounting Bolt)	2
61c	31034	3/8 Flat Washer	6
61d	31008	3/8 Lock Washer	4
61e	31009	3/8-16 Hex Nut	4
62	61080	Breather Cap	1
63	34022	Intake Hose 16" x 7'	1
64	34024	Hose Clamp 16"	4
65	20157	Intake Nozzle 16"	1

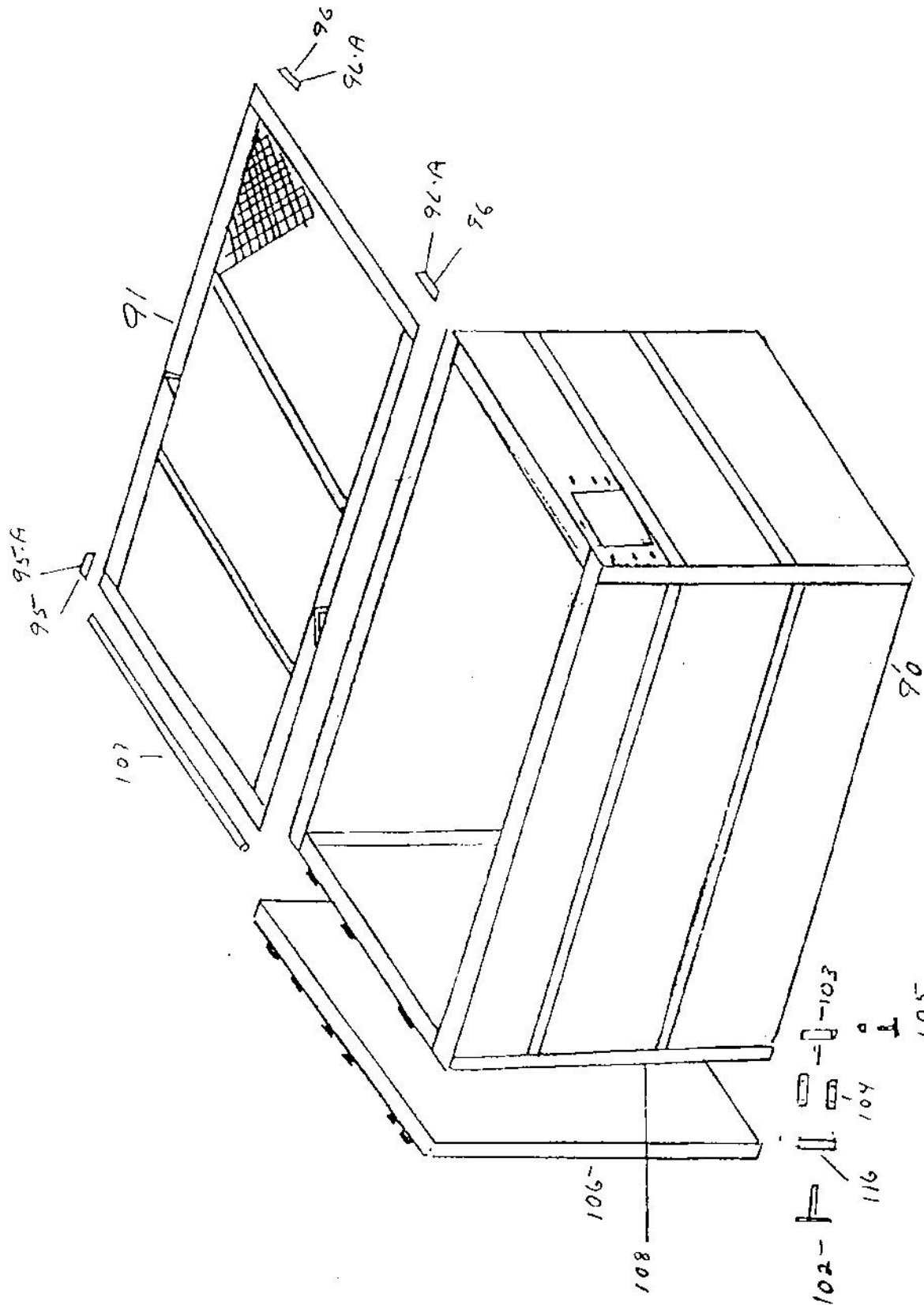
ITEMS NOT SHOWN

70788	Replacement Housing Wear Liner (w/Hardware)	1
71132	Replacement Elbow Liner (w/Hardware)	1
39043	35hp Briggs & Stratton Engine	1
32301	Exhaust Elbow 90-Degrees	1
32302	Cap, Rain	1
32303	Clamp, Muffler U-Bolt	1
31097	3/8-16 x 1-1/4 Hex Bolt (Engine Mount Bolt)	12
31034	3/8 Flat Washer	24
31008	3/8 Lock Washer	12
31009	3/8-16 Hex Nut	12
31828	Brass Fuel Tank Fitting 1/4 IPT to 1/4 Farrell	1
31753	1/4 Copper Fuel Line 15" Length	1
31755	1/4 Rubber Fuel Line 10" Length	1
40100	Battery Box	1
31097	3/8-16 x 1-1/4 Hex Bolt	2
31008	3/8 Lock Washer	2
31009	3/8-16 Hex Nut	2
34041	1/2" Hose Clamp	2
39190	Valve, Oil Drain	1
61215	Lock-On Hose 1/2	1
61233	Hydraulic Adapter 14MM	1
61234	Seal 14MM	1
39021	Battery	1
31763	Battery Cable 16S	1
31818	Battery Cable 42S	1
31839	Terminal Cover - Black	1
31840	Terminal Cover - Red	1
31453	Pusher Bolts	3
37172	Belt Guards Bearing Pulley	1
37173	Belt Guards Engine Pulley	1
37174	Belt Guards Right Bearing Box	1
37175	Belt Guards Left Bearing Box	1
36344	Belts 450-5	1
36347	Sheave, Pulley 6.90	1
36340	Bushing 1.438	1
36346	Sheave, Pulley 4.75	1
36233	Bushing 1.438	1
36163	Bearing 1.438	2
36345	Shaft, Impeller	1
31458	Collar, Split Single 1.438	2



Trailer Frame
Model
35BVGB-TR10





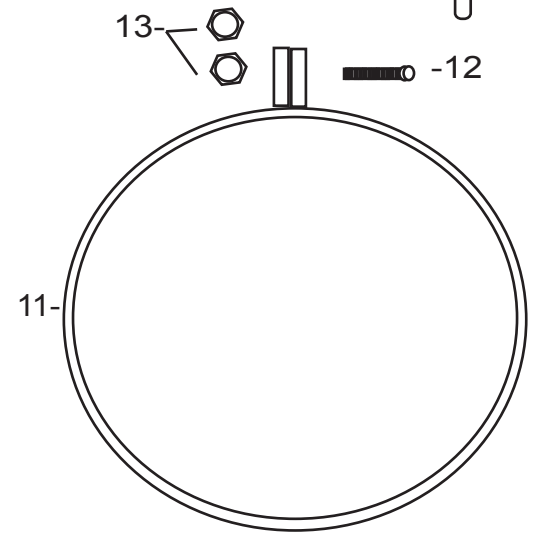
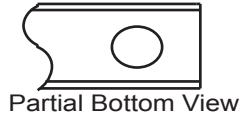
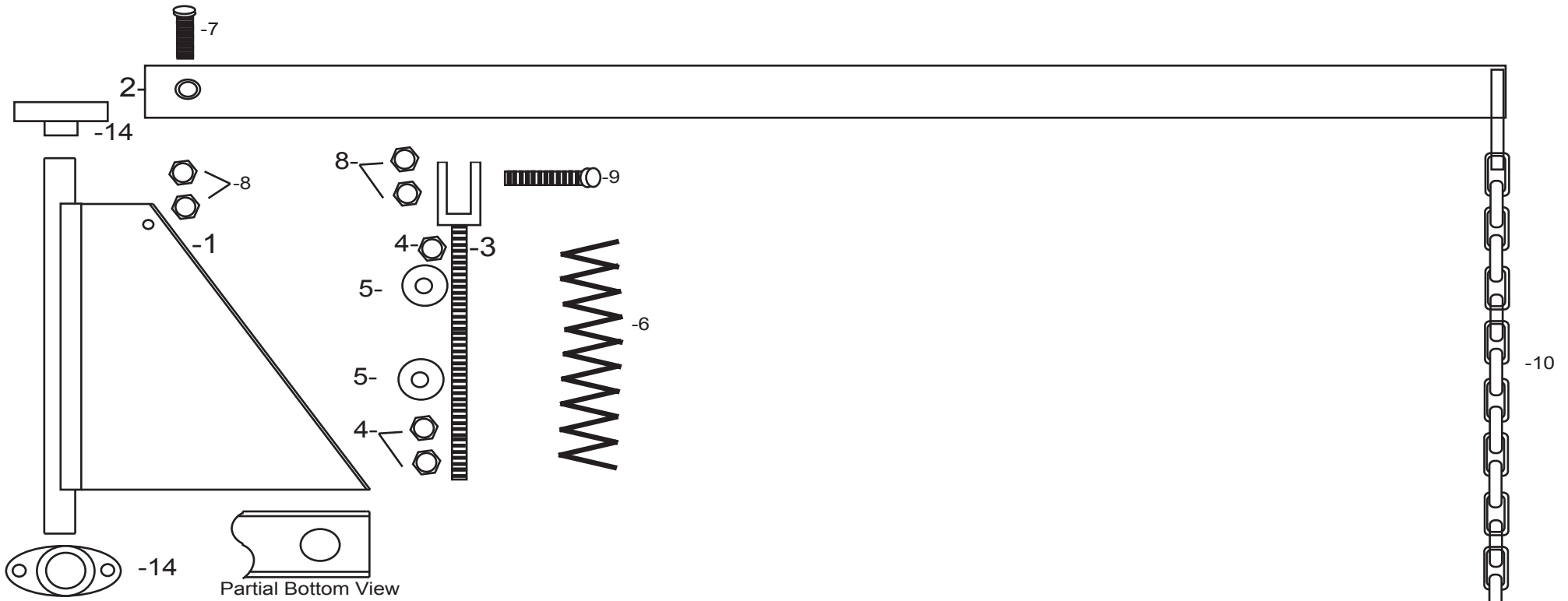
Leaf Box
 Model
 35BVGB-TR10

LEAF BOX AND FRAME

<u>REF. NO.</u>	<u>PART NO.</u>	<u>DESCRIPTION</u>	<u>35BVGB-TR10</u>
85	27378	Trailer Frame	1
86	33129	Axle and Spring Assembly	2
87	33125	Tire & Rim Assembly	4
88	33130	Rim Lock	20
89	33131	Lug Nut	20
90	27379	Leaf Box - 10 Cubic Yard	1
92	27191	Hoist Box Bracket	2
93	61112	Hoist 10 Yard	1
94	61052	Hydraulic Hose 1/2 x 123	1
94a	61054	Hydraulic Hose 1/2 x 143	1
95	31499	Running Light Assembly (Cat's Eye) Red	7
95a	31501	Replacement Lins - Red	7
96	31500	Running Light Assembly (Cat's Eye) Amber	4
96a	31502	Replacement Lins - amber	4
97	33132	Dust Cap	4
98	33133	Bearing Seal	8
99	33134	Bearing	8
100	27192	Hoist Trailer Bracket	2
101	31503	Hoist Pin	1
102	31625	5/8-11 Handle Nut	2
102a	31489	5/8 Flat Washer	2
103	31504	Door Lock Pivot T-Bolt	2
104	27195	Door Lock Side Piece	4
105	31335	1/2-13 x 4 Hex Bolt	2
105	31021	1/2-13 x 4-1/2 Hex Bolt	4
105a	31406	1/2-13 Lock Nut	6
106	27380	Back Door	1
107	23160	Back Door Rod	1
108	31506	Door Gasket	1
115	31639	Stop & Tail Light Assembly	2
115a	31562	#12 x 3/4 Self Tap Screw (Tail Light Grouding Screw)	2
116	27200	Door Latch Holder	2

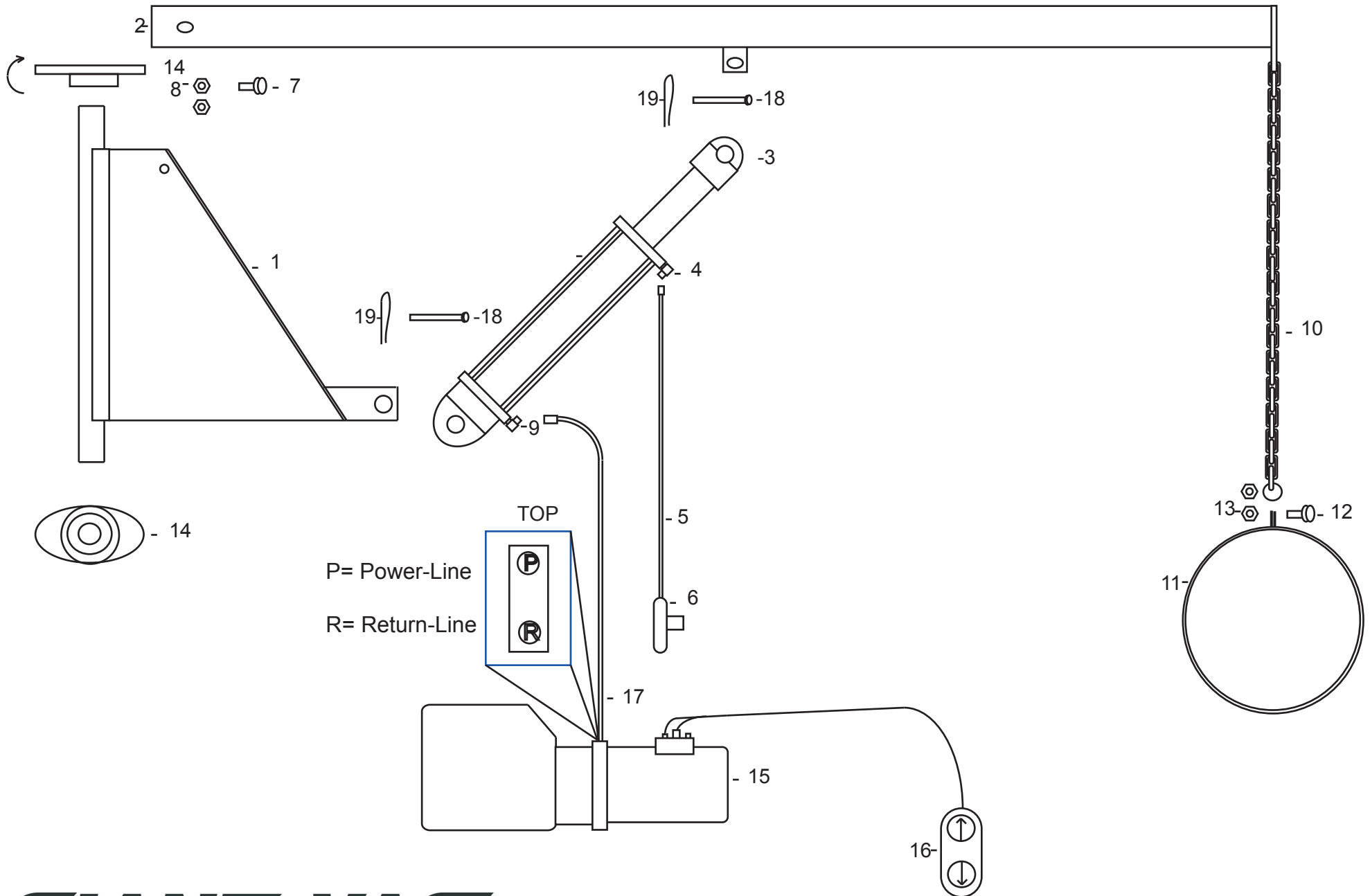
ITEMS NOT SHOWN

31842	Wiring Harness - Trailer	1
31845	Wiring Harness - Top Screen (Running Lights)	1
31751	License Light Assembly	1
31752	License Plate Mounting Bracket	1
31030	1/4-20 Hex Nut (License Light/Bracket Mounting Hardware)	4
31013	1/4 Lock Washer	2
31757	Bolt-On Wiriing Harness Clip	15
31013	1/4 Lock Washer	15
31030	1/4-20 Hex Nut	15
31849	Plastic Cable Tip 28"	2



GIANT-VAC[®]
 Hose Support Boom
 (Manual)

Hose Support Boom (Hyd.)



HOSE SUPPORT BOOM (MANUAL - Standard)

<u>Ref No.</u>	<u>Part No.</u>	<u>Description</u>	<u>Qty</u>
1	40159	Boom Vertical New Bearing Style	1
2	40106	Boom Horizontal Member	1
3	40108	Threaded Spring Guide	1
4	31110	Hex Nut 3/4	2
5	31023	Flat Washer 3/4	2
6	31332	Boom Coil Spring	1
7	31025	Hex Bolt 1/2 x 3	1
8	31406	Lock Nut 1/2	2
9	31025	Hex Bolt 1/2 x 3	1
10	31140	Boom Chain	1
11	40112	Hose Support Band	1
12	31141	Hex Bolt 5/16 x 3-1/2	1
13	31004	Hex Nut 5/16	2
14	36299	Bearing, Flanged 1.50, 2-Bolt (Bearing Style Only)	2

HOSE SUPPORT BOOM (HYDRAULIC - Optional)

<u>Ref No.</u>	<u>Part No.</u>	<u>Description</u>	<u>Qty</u>
1	40132	Boom Member, Lower Hydraulic Bearing Style	1
2	40128	Boom Member, Upper	1
3	61152	Cylinder Ram	1
4	61131	Hydraulic Adapter Fitting	1
5	61052	Hydraulic Hose, .375x123.00in	1
6	61129	Hydraulic Flow Regulator	1
7	31025	Hex Bolt 1/2 x 3	1
8	31406	Reverse Lock Nut, .500-13UNC	2
9	61131	Hydraulic Adapter Fitting	1
10	31140	Chain w/2 S-Hooks	1
11	40112	Band Assy, Hose Support, 18.00	1
12	31141	Hex Head Bolt 5/16 x 3-1/2	1
13	31004	Hex Nut 5/16-18	1
14	36299	Bearing, Flanged 1.50, 2-Bolt (Bearing Style Only)	2
15	61116	12V Hydraulic Power Unit	1
15a	61098	Plastic Hydraulic Tank	1
16	61156	Remote Control 3-Wire Switch Box	1
17	61210	Hydraulic Adapter Fitting	1
17a	61213	Breather, 1/2 NPT	1
18	--	For Reference Purposes Only, Included in 61152	2
19	--	For Reference Purposes Only, Included in 61152	4

WARRANTY

Janiak Manufacturing, Inc., here-in-after called Giant-Vac™ Municipal, will warrant each new Giant-Vac product to be free from manufacturing defects in normal service for a period of one (1) year for municipal use. This warranty extends only to the original purchaser of the product and cannot be transferred. This warranty does not apply to engines, tires or other items that are purchased by Giant-Vac and warranted by the manufacturer of such items. Items such as; bags, grass catchers, hoses and blades are not warranted, as these are considered expendable items. This warranty does not include equipment failures due to normal wear.

Any obligation under this warranty is expressly limited to the replacement or repair, at an authorized servicing Giant-Vac™ Municipal dealer, or at a point designated by us, of such parts as appears to us to have been defective. All defective parts have to be returned freight prepaid before credit will be issued.

We shall not be liable for transportation charges in connection with the replacement or repair of defective parts.

This warranty does not apply to a Giant-Vac™ upon which repairs or alterations have been made by others except with our prior written approval.

We shall not be liable for consequential damages or contingent liabilities for the fitness of any Giant-Vac™ for any particular purpose.

We make no other express, implied or statutory warranty, nor is anyone authorized to make any in our behalf.

Engines are a separate warranty:

Wisconsin – One (1) year warranty direct from Wisconsin

John Deere – Two (2) year warranty direct from John Deere

Briggs – direct from Briggs & Stratton

Janiak Manufacturing, Inc.

P.O. BOX 195
SOUTH WINDHAM, CT. 06266
PHONE: 860-423-7741 • FAX: 860-423-2654

WARRANTY REGISTRATION

SOLD TO: _____

DEALER: _____

Giant-Vac MODEL: _____

SERIAL #: _____

ENGINE MODEL: _____

SERIAL #: _____

PURCHASE DATE: _____

ORDER#: _____

MANUFACTURER: **Janiak Manufacturing, Inc.**
P.O. BOX 195
South Windham, CT 06266

DESCRIPTION:

Janiak Manufacturing Warranty

JANIAK MANUFACTURING, INC., here-in-after called Giant-Vac™ Municipal, warrants each new Giant-Vac™ Municipal machine to be the original retail purchaser of new Giant-Vac™ Municipal equipment to be free from manufacturing defects in normal service for a period of one (1) year unless it is used for rental purposes which limits the warranty to 30 days. This warranty does not apply to engines, tires or other parts that are manufactured and warranted by the manufacturer. Items such as bags, grass catchers, hoses and blades are not warranted as these are considered expendable items. This warranty does not include equipment failures due to normal wear.

An obligation under this warranty is expressly limited to the replacement or repair at an authorized servicing Giant-Vac™ Municipal dealer, or at a point designated by us, of such part or parts as shall appear to us to have been defective. All defective parts have to be returned freight prepaid before credit is issued.

We shall not be liable for transportation charges in connection with the replacement or repair of defective parts.

This warranty does not apply to a Giant-Vac™ Municipal machine upon which repairs or alterations have been made by others except with our prior written approval.

We shall not be liable for consequential damages or contingent liabilities nor for the fitness of any Giant-Vac™ Municipal machine for any particular purpose.

We make no other express, implied or statutory warranty, nor is anyone authorized to make any in our behalf.

Engines are a separate warranty: (claims to be filed directly with Engine Manufacturer/Distributor)

John Deere – Two (2) year warranty direct from John Deere

Wisconsin – One (1) year warranty direct from Wisconsin