

ASSEMBLY AND OPERATION INSTRUCTIONS FOR GIANT-VAC™ MODELS FM3500 & FM6500

As you unpack your Giant-Vac Truck Loader, you will find the following parts:

- 1 - Power Unit and blower Housing Assembly with Forward Leveling Support Stands
- 2 - Aft Hanger Bracket for Snow Plow Hitch Adaptor and Containing Leveling Jack Brackets
This, in all probability will be fastened to your Power Unit on delivery.
- 3 - Two Leveling Jacks to be installed on above
- 4 - Exhaust Chute to Fasten to Housing
- 5 - Two Flange Sections to fit into Exhaust Chute
- 6 - Short Length of 12 inch flexible Hose to connect the two Flanged Sections
- 7 - Two 12 inch Hose Clamps for above
- 8 - Exhaust Section to bolt to truck
- 9 - Flange Section to contain No. 5 to be welded to Exhaust Section No. 8
- 10- Intake Flange
- 11- 7 Foot Length of Intake Hose with Wear Strip
- 12- Intake Nozzle
- 13- Boom Assembly
- 14- Hose Support Band
- 15- Length of Chain to connect Hose Support Band to Boom necessary hardware to assembly
- 16- Engine Manual

Inspect parts for any damage that may have occurred in shipping. If found, save the packing box and IMMEDIATELY notify the transport carrier who delivered your machine. They are responsible for the damage and are the only ones to make any adjustments. Before leaving our plant, we hold all dimensions to close tolerances, thus, you will have little difficulty in assembling your Giant-Vac Truck Loader if you follow these steps.

CALIFORNIA PROPOSITION 65 WARNING

Gasoline and diesel engine exhaust and some of its constituents are known to the State of California to cause cancer, birth defects, and other reproductive harm.

As an owner of off-road gasoline or diesel engine equipment and/or as an employer, you also may have an obligation under the California Occupational Safety and Health Act or under Proposition 65 to warn persons exposed to diesel engine exhaust and /or other Proposition 65 chemicals in and around your workplace. See California Health and Safety Code section 25249.5, Title 22 of the California Code of Regulations at section 1200, *et seq.*, and Title 8 of the California Code of Regulations section 5194.

ASSEMBLY INSTRUCTIONS

ENGINE INSTRUCTIONS:

An Engine Manual is supplied with each shipment. This should be read carefully. Instructions on Oil Changes should be carefully noted to ensure maximum engine life.

We recommend that the engine be run at a fast idle for at least 6 hours. Following this, the engine should be re-tuned. A good check should include the carburetor and timing adjustments. The governor should be set at approximately 50 R.P.M. under top speed.

The engine manufacturer warrants the engine. Please be certain to mail to them, the warrantee card, immediately. If any engine problems exist, please contact their nearest service center as only they can authorize any warrantee claims.

ASSEMBLING POWER UNIT TO TRUCK:

Level the Power Unit with the four support stands to the desired height for operation conditions. Next, move the truck – with the plow hitch mounted to the Power Unit. Fasten lugs in the plow hitch – which are then welded to the Aft Hanger Bracket on the Power Unit.

A Chain should then be fastened to your lifting cylinder arm and connected to the two rings found on either side of the engine frame. This should be done when the cylinder is at least partially down in order that the unit may later be raised. It is good practice to also connect two “Dead Man” chains in order to ensure your Giant-Vac™ Loader stays in this position when in operation.

ASSEMBLING EXHAUST SECTION:

The Blower Housing should be bolted to the Engine Base at 30-degrees from a true vertical position. If your housing is not assembled in this manner, it can readily be changed by removing the bolts holding it to the engine base and rotating it one set of holes.

The Exhaust Sections should next be installed. This is secured by (4) 3/8-inch bolts through the corner clips and (2) 1/2-inch bolts on the side clips. The 1/2-inch bolts should be securely locked as a safety precaution.

The Flanged Section that mounts to the Leaf Collection box should next be installed in line with the Exhaust Section. This is supplied in a long length and may have to be cut to suit your conditions. To determine this, measure the distance between the end of the Exhaust Duct, connected to your Power Unit, and the Exhaust Sections, connected to your truck. This distance should be between 30 to 36 inches.

After cutting this to the proper length, weld on the Flange Section which is similar to the one welded on to the Exhaust Section which is now mounted on your Power Unit.

Now, slide the two Flanged Sections into both receptacles on the Exhaust Sections. Next, install the Flexible Hose over these and fasten by means of the Stainless Steel Hose Clamps. Be certain the hose is stretched tight. If it is not stretched tight, debris will collect in this section.

BOOM ASSEMBLY:

The Boom should then be installed in the Boom Holder. This is done by sliding the Vertical Arm into the Upper Bracket and then dropping down into the Lower Bracket. The Outrigger Arm is next installed and fastened with a 1/2-inch bolt and locknuts. The Threaded Support Spring Arm is fastened – which completes this assembly.

HOSE ASSEMBLY AND POSITIONING:

The Hose is next installed and secured to the Flange by means of a Stainless Steel Hose Clamp. Following this, the Boom Hose Support Band is slipped over the Hose. This should be secured about 2 feet from the end of the Hose. The Pick-Up Nozzle is next installed and fastened with a second Hose Clamp.

A Chain connects the Hose Support Band to the end of the Boom. It is vitally important that this chain is adjusted correctly for ease of operation. In general, the Chain should be so adjusted that the Nozzle is approximately 12 inches off the ground.

The ultimate check to be certain this adjustment is correct takes place after the machine is running at operating speed. To make this check, speed up the engine. You should then be able to push the nozzle to the ground and pull it back up by using three fingers of one hand. If you cannot operate the Nozzle accordingly, either the chain should be re-adjusted or the spring tension of the Boom Assembly, changed. A few minutes time in adjusting this correctly will ensure ease in operation.

OPERATION:

Your Giant-Vac™ Loader is a very easy machine to operate. Be certain the Boom is properly adjusted according to the instructions found in an earlier section of this manual.

In operation, you will note the Boom will readily swing over a 10-foot path. This allows you to readily clean a wide area, efficiently. If the pile is high, a short back and forth flicking motion will effectively eat into the pile of leaves.

If the leaves are wet, it is best to move into the pile with a “gulping” motion. In this way, you will pick up a quantity and then move the hose slightly away from the pile to allow the leaves to rapidly flush through.

UPLOADING AND UPCOUPLING GIANT-VAC™ LOADER:

When the load is ready to be dumped, the following should be performed. Raise-up on the Cylinder Hoist. This puts some slack in the Exhaust Hose Section. Next, slide one of the Flange Sections out, and the truck is now ready to dump.

If more than one truck is to be used, your Giant-Vac™ Loader can be readily disconnected by performing the following:

While the Cylinder Hoist is raised, drop down the two forward Kick Stands. Uncouple the Exhaust Hose and then lower the Cylinder. Next, lower the two Aft Screw Jacks and uncouple. Your Giant-Vac™ Loader is now ready to mount on the next truck.

DEBRIS BOXES:

Your Giant-Vac™ Loader can readily be used in conjunction with a dump truck or garbage packer. The following are a few thoughts, which we hope might be helpful in constructing these boxes.

To begin with, it is important to have an adequate screened section for allowing the tremendous volume of air that your Giant-Vac™ Loader gulps up each minute, to escape. As a matter of fact, we strongly recommend the entire top be covered with screening. One inch expanded mesh or ¼ square wire makes an excellent screen. The theory behind this is quite simple. For example, if 10 square feet of exhaust section would produce a 100 miles per hour exhaust velocity, this would be cut down to a 10 mile per hour exhaust velocity if the opening was increased to 100 square feet.

If a dump truck is used, the collection box is generally fabricated out of plywood and angle iron. Quite often a 3-inch angle iron frame is first fabricated. The sides are lined with ¾ inch thick exterior type plywood. Do not use any thinner plywood, as the internal pressure is apt to blow the sides out.

A frame is made for the top, which is next covered with metal screening. The dump truck should be removed. A door should then be fabricated with is hinged at the top. This also can be fabricated from angle iron and plywood.

SAFETY AND OPERATING INSTRUCTIONS FOR GIANT-VAC™ LEAF LOADERS

TRAINING:

1. Regard your Giant-Vac as a piece of power equipment and teach this regard to all who will operate this unit.
2. **Never** allow children or young teenagers to operate the Giant-Vac.
3. Be sure you know how to stop the engine at a **MOMENT'S NOTICE**.
4. Instruct children to keep away from the area of operation at all times.

PREPARATION:

1. Before starting operation, clear the **entire** work area of all debris that could catch on or be thrown by the Truck Loader.
2. Unless there is very good artificial light, use **only** during daylight.
3. Fill diesel-fuel driven machines outdoors. Avoid spilling diesel fuel and **DO NOT** fill the engine while it is running or while you are smoking.

OPERATION:

1. **NEVER INSERT ANY BODY PART OR OTHER FOREIGN OBJECT IN ANY OPENING WHILE THE MACHINE IS RUNNING.**
2. **CAUTION: WHEN TRANSPORTING THE TRUCK LOADER, DO NOT EXCEED 30 M.P.H. HIGH SPEED DRIVING AND POOR ROAD CONDITIONS CAN CAUSE DAMAGE TO THE TRUCK LOADER AND THE TOW VEHICLE. MAKE SURE THE HOSE AND BOOM ARE SECURED BEFORE TOWING YOUR TRUCK LOADER.**
3. Do **not** operate with any guards or component parts removed from unit.
4. Before making any adjustments or repairs, **stop engine** and remove spark plug wire.
5. While in operation, **keep all parts of body** away from intake and exhaust sections.
6. When operating machine, keep people and pets a safe distance away.
7. Before starting, be certain to check the engine's **OIL AND DIESEL FUEL**. (See engine manufacturer's Service Manual.) **NEVER** check the engine while engine is running or while you are smoking. Check **ONLY** when engine is cold.
8. Before starting the engine, be certain to **completely** assemble the unit. With your right hand, set the throttle control to the "on" position. When the engine is cold, you might have to initially choke the engine. (The choke lever is next to the carburetor.) Next, make sure the battery is charged and both battery cables are properly connected. Turn the ignition key to "START" and the engine should start. After the engine starts, move the throttle lever down to approximately halfway.
9. After the machine is running, check the adjustment of the chain on the hose support. This is **vitaly important** for ease of operation. To make this check, speed up the engine. You should then be able to push the nozzle to the ground and pull it back up by using three fingers of one hand. If you can not operate the nozzle accordingly, either the chain should be readjusted or the spring tension of the boom assembly changed.

10. We recommend the following for efficient use of the truck loader: If the leaves are dry, run the machine at approximately half throttle. This will help reduce the amount of small particles of debris escaping through the exhaust screen. When the leaves are wet or partially frozen, run the machine at full throttle.
11. The Truck Loader is designed to be used in conjunction with a truck that has a receiver box installed. Be sure the receiver box is of adequate construction to withstand the high velocity and force of the incoming debris. **NEVER** run or operate your Truck Loader unless it is completely connected to a receiver box and the intake hose is installed.
12. **NEVER** allow a person to ride, sit or stand on the Truck Loader. **NEVER** allow a person to ride, sit or stand on the towing vehicle other than in the driver's cab of the towing vehicle.
13. Make sure that the driver of the towing vehicle has the operator of the Truck Loader in **full view at all times**. Also, when operating the Truck Loader, instruct the operator to stay to the side of the machine, **never** in front or behind.
14. To uncouple the machine, either to empty the box or when finished using it, **first** lower the rear support leg. Next, crank down the forward jack. Now uncouple the machine from the truck. Perform the reverse to couple the machine to the truck. Quite often a "U" bracket is used to support and guide the flexible metal hose into the hole in the debris box.

MAINTENANCE AND STORAGE:

1. Follow **implicitly** the engine manufacturer's recommendations for maintenance and storage.
2. **Never** adjust the Truck Loader or change attachments until the engine is off and the spark plug wire disconnected.
3. If carburetor adjustment is necessary, stand to one side and **keep feet and hands** in the clear while making adjustments.
4. Keep engine free from accumulations of grass, leaves or excessive grease. An accumulation of these combustible materials may result in a fire.
5. Store diesel fuel in a **safe and approved** container in a cool dry place.
6. Keep the Truck Loader and fuel container in **locked** storage to prevent children from playing and/or tampering with them.
7. DO NOT store diesel powered equipment or diesel fuel containers in a basement or any closed area where heating or heat appliances or open pilot lights are present, unless the fuel is completely drained from the power equipment and the fuel containers.

WARRANTY

Janiak Manufacturing, Inc., here-in-after called Giant-Vac™ Municipal , will warrant each new Giant-Vac product to be free from manufacturing defects in normal service for a period of one (1) year for municipal use. This warranty extends only to the original purchaser of the product and cannot be transferred. This warranty does not apply to engines, tires or other items that are purchased by Giant-Vac and warranted by the manufacturer of such items. Items such as; bags, grass catchers, hoses and blades are not warranted, as these are considered expendable items. This warranty does not include equipment failures due to normal wear.

Any obligation under this warranty is expressly limited to the replacement or repair, at an authorized servicing Giant-Vac™ Municipal dealer, or at a point designated by us, of such parts as appears to us to have been defective. All defective parts have to be returned freight prepaid before credit will be issued.

We shall not be liable for transportation charges in connection with the replacement or repair of defective parts.

This warranty does not apply to a Giant-Vac™ upon which repairs or alterations have been made by others except with our prior written approval.

We shall not be liable for consequential damages or contingent liabilities for the fitness of any Giant-Vac™ for any particular purpose.

We make no other express, implied or statutory warranty, nor is anyone authorized to make any in our behalf.

Engines are a separate warranty (Claims for parts, labor and mileage are to be filed directly with Engine Manufacturer/Local Dealer not Janiak Manufacturing):

Wisconsin – One (1) year warranty direct from Wisconsin

John Deere – Two (2) year warranty direct from John Deere

Janiak Manufacturing, Inc.

P.O. BOX 195
SOUTH WINDHAM, CT. 06266
PHONE: 860-423-7741 • FAX: 860-423-2654

WARRANTY REGISTRATION

SOLD TO: _____

DEALER: _____

Giant-Vac MODEL: _____

SERIAL #: _____

ENGINE MODEL: _____

SERIAL #: _____

PURCHASE DATE: _____

ORDER#: _____

MANUFACTURER: Janiak Manufacturing, Inc.
P.O. BOX 195
South Windham, CT 06266

DESCRIPTION:

Janiak Manufacturing Warranty

JANIAK MANUFACTURING, INC., here-in-after called Giant-Vac™ Municipal, warrants each new Giant-Vac™ Municipal machine to be the original retail purchaser of new Giant-Vac™ Municipal equipment to be free from manufacturing defects in normal service for a period of one (1) year unless it is used for rental purposes which limits the warranty to 30 days. This warranty does not apply to engines, tires or other parts that are manufactured and warranted by the manufacturer. Items such as bags, grass catchers, hoses and blades are not warranted as these are considered expendable items. This warranty does not include equipment failures due to normal wear.

An obligation under this warranty is expressly limited to the replacement or repair at an authorized servicing Giant-Vac™ Municipal dealer, or at a point designated by us, of such part or parts as shall appear to us to have been defective. All defective parts have to be returned freight prepaid before credit is issued.

We shall not be liable for transportation charges in connection with the replacement or repair of defective parts.

This warranty does not apply to a Giant-Vac™ Municipal machine upon which repairs or alterations have been made by others except with our prior written approval.

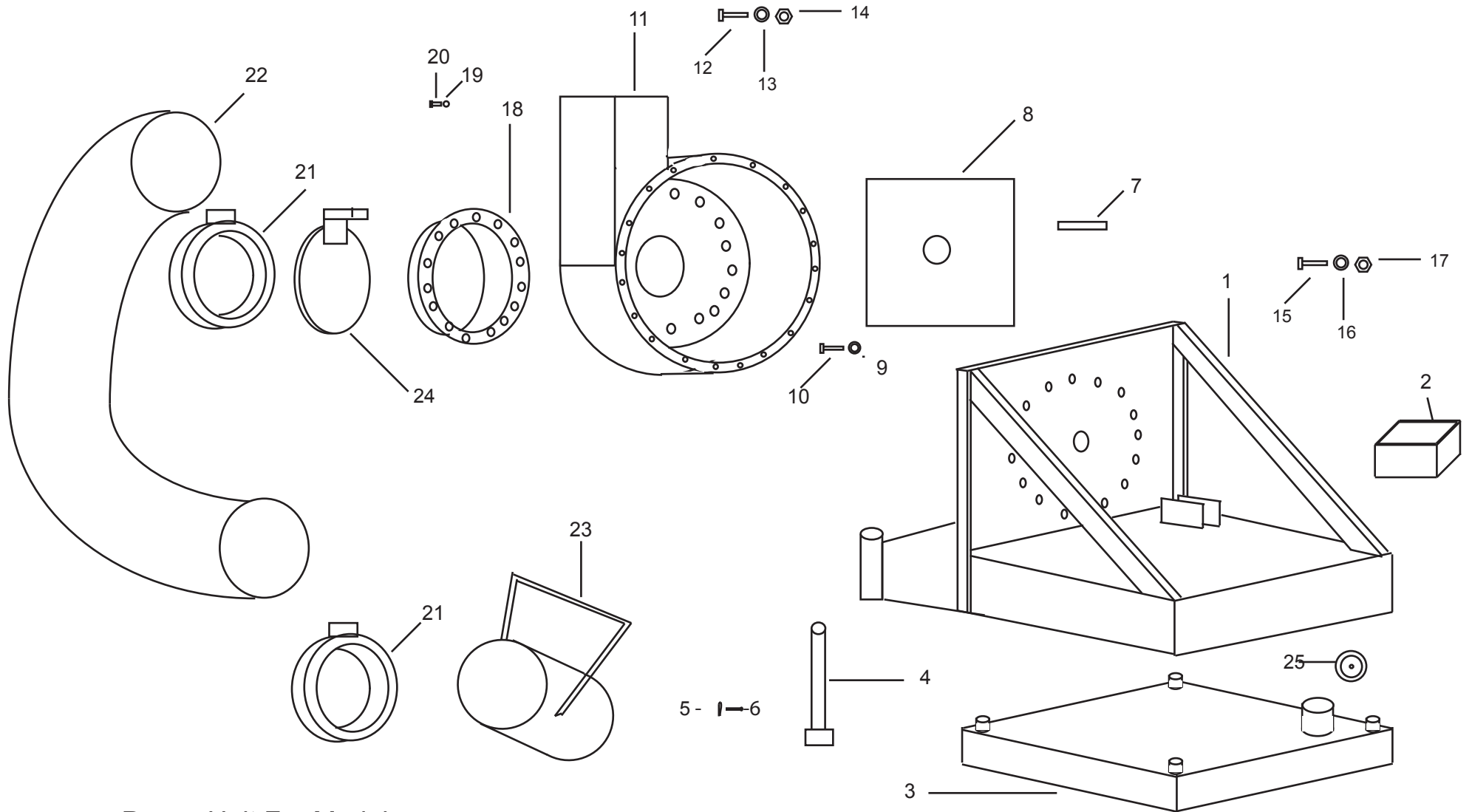
We shall not be liable for consequential damages or contingent liabilities nor for the fitness of any Giant-Vac™ Municipal machine for any particular purpose.

We make no other express, implied or statutory warranty, nor is anyone authorized to make any in our behalf.

Engines are a separate warranty:

John Deere – Two (2) year warranty direct from John Deere
Wisconsin – One (1) year warranty direct from Wisconsin

GIANT-VAC®



Power Unit For Models:
FM 3000 & FM 6500

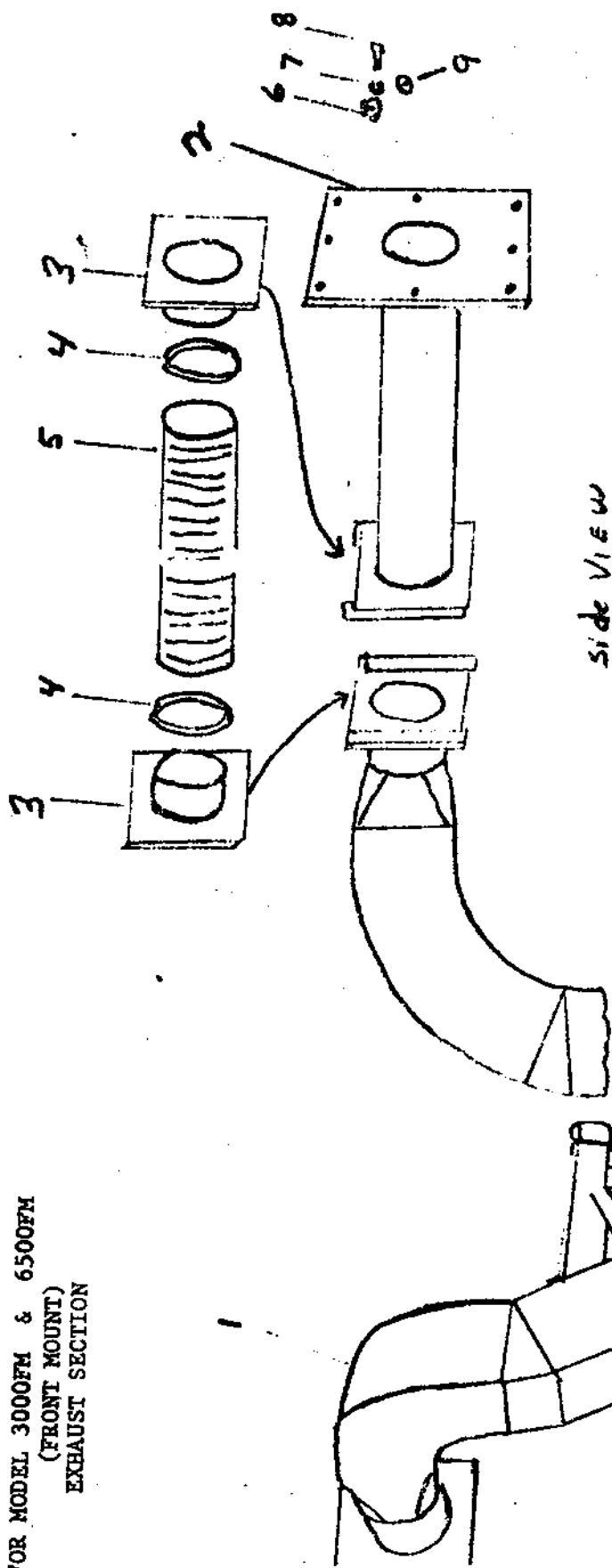
POWER UNIT - Front Mount

<u>Ref No.</u>	<u>Part No.</u>	<u>Description</u>	<u>FM3500</u>	<u>FM6500</u>
1	10039	Engine Base	1	--
1	10040	Engine Base	--	1
2	40100	Battery Box	1	1
3	40103	Gas Tank - 65hp only	--	1
4	40105	Adjustable Leg	2	2
5	31126	Spring Clip	2	2
6	31125	3/8" x 3" Pin	2	2
7	31127	Impeller Key .375 SQ x 4.50	1	--
7	31128	Impeller Key .500 SQ x 5.25	--	1
8	21518	Impeller	1	--
8	21519	Impeller	--	1
9	31326	5/8" Lockwasher	1	1
10	31328	5/8" x 2" Impeller Bolt	1	--
10	31974	5/8" x 2-1/2" Impeller Bolt	--	1
11	10041	Blower Housing	1	--
11	10042	Blower Housing	--	1
12	31033	3/8" x 1" Hex Bolt	13	--
12	31084	1/2" x 1-1/4" Hex Bolt	--	18
13	31008	3/8" Lockwasher	13	--
13	31078	1/2" Lockwasher	--	18
14	31009	3/8" Hex Nut	13	--
14	31022	1/2" Hex Nut	--	18
15	31084	3/8" x 1-1/4" Hex Bolt	2	2
16	31008	3/8" Lockwasher	2	2
17	31009	3/8" Hex Nut	2	2
18	20159	Intake Flange 16"	1	--
18	20160	Intake Flange 18"	--	1
19	31078	1/2" Lockwasher	12	16
20	31022	1/2" Hex Nut	12	16
21	34024	Clamp 16"	2	--
21	34025	Clamp 18"	--	2
22	34022	Intake Hose 16" x 7'	1	--
22	34023	Intake Hose 18" x 8'	--	1
23	20157	Intake Nozzle 16"	1	--
23	20158	Intake Nozzle 18"	--	1

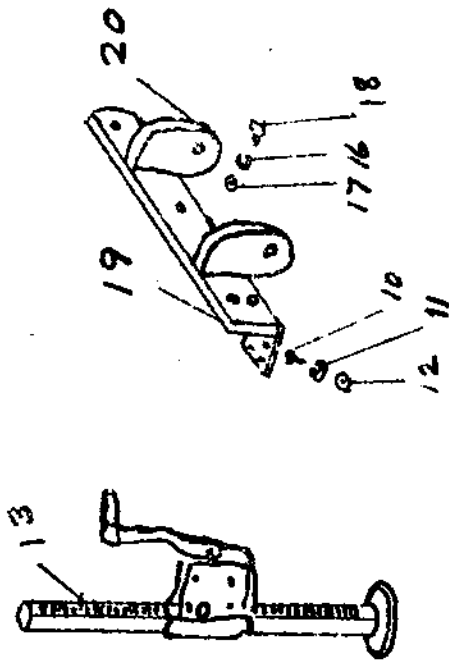
ITEMS NOT SHOWN

39021	Battery	1	1
39026	35hp Wisconsin Engine Tier II	1	--
39023	65hp Wisconsin Engine	--	1

FOR MODEL 3000FM & 6500FM
 (FRONT MOUNT)
 EXHAUST SECTION

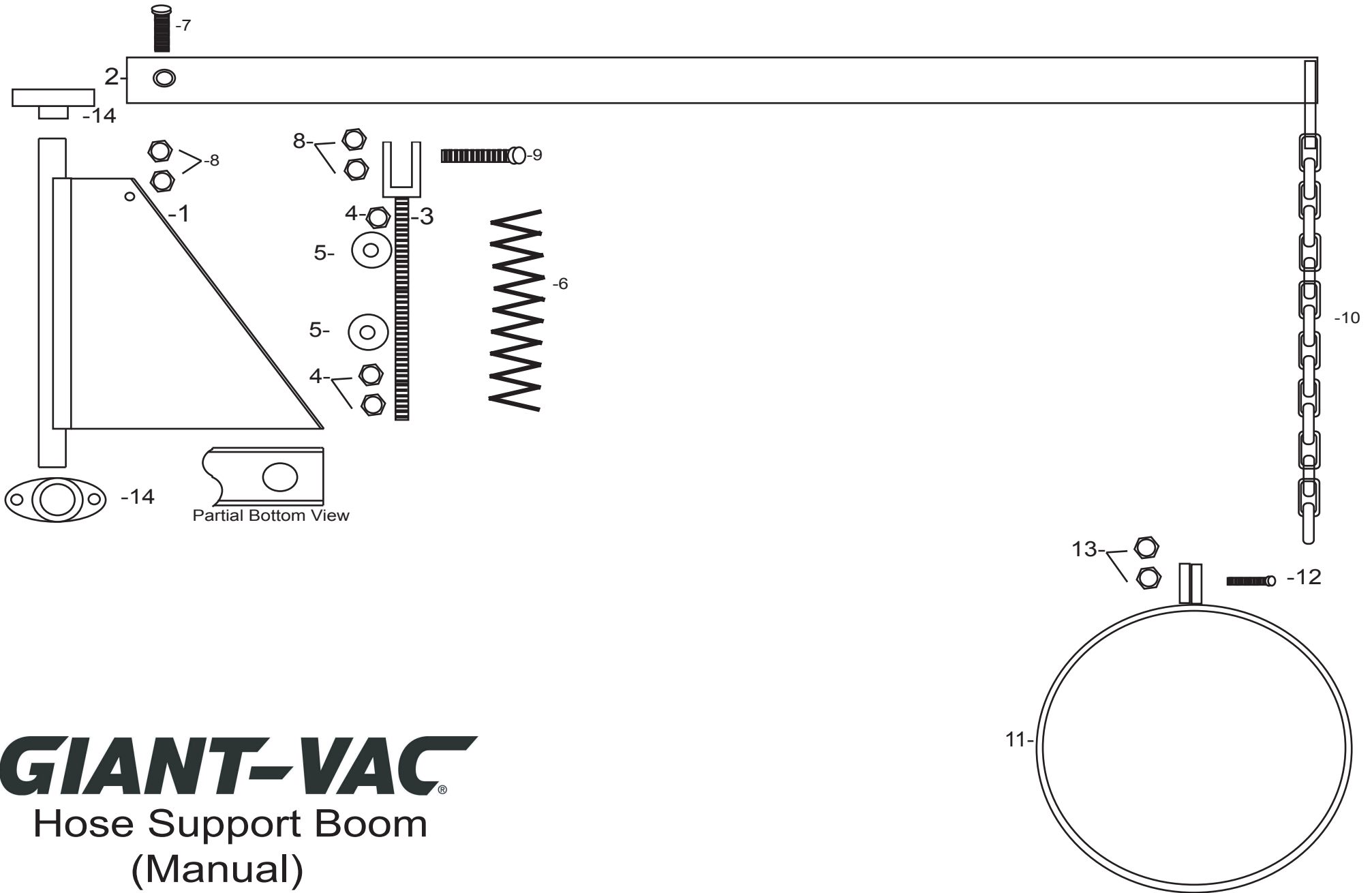


side view



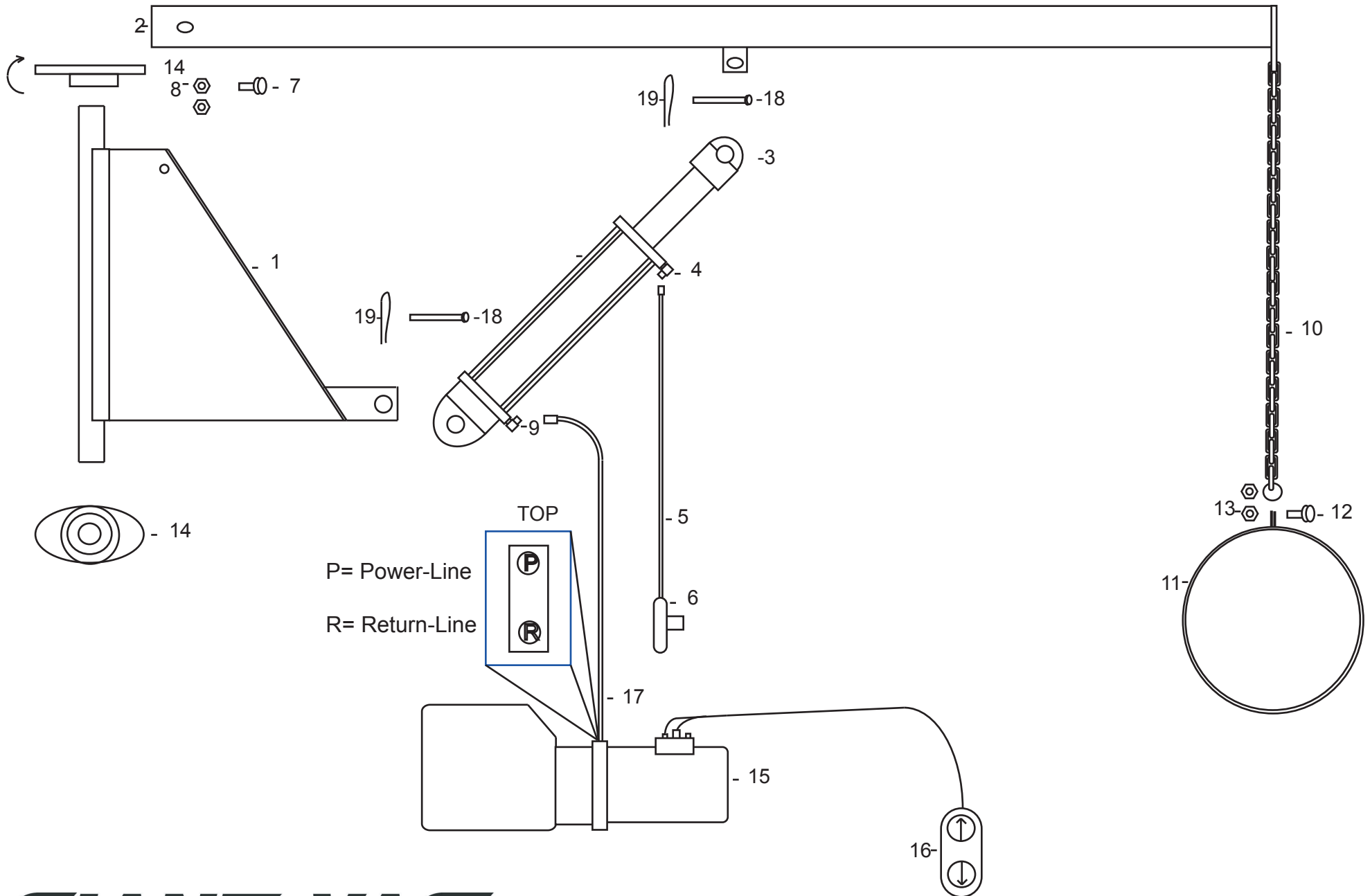
EXHAUST SECTION - Front Mount

<u>Ref No.</u>	<u>Part No.</u>	<u>Description</u>	<u>FM3500</u>	<u>FM6500</u>
1	24544	Exhaust Duct Sq. to 45-Degrees 10-1/2" x 12" - 12" Rd.	1	--
1	24545	Exhaust Duct Sq. to 45-Degrees 12" x 12" - 12" Rd.	--	1
2	24546	Exhaust Duct Body Flange	1	--
2	24547	Exhaust Duct Body Flange	--	1
3	24548	Square Plate to 12" Round	2	--
3	24549	Square Plate to 12" Round	--	2
4	34020	12" Hose Clamps	2	2
5	34027	12" x 3' Hose	1	1
6	31004	5/16" Hex Nut	8	8
7	31003	5/16" Lockwasher	8	8
8	31005	5/16" x 1-1/4" Hex Bolt	8	8
9	31027	5/16" Flat Washer	16	16
10	31033	3/8" x 1" Hex Bolt	8	8
11	31008	3/8" Lockwasher	8	8
12	31009	3/8" Hex Nut	8	8
13	33040	Jack (1) Wheel	2	2
14	31021	1/2" x 4-1/2" Hex Bolt	2	2
15	31043	1/2" Flat Washer	4	4
16	31078	1/2" Lockwasher	7	7
17	31022	1/2" Hex Nut	7	7
18	31086	1/2" x 1-3/4" Hex Bolt	5	5
19	38005	Back Plate for Adjustable Jack	1	--
19	38006	Back Plate for Adjustable Jack	--	1
20	38007	Bar Plates for Snow Plow Hook-Up	2	2



GIANT-VAC[®]
 Hose Support Boom
 (Manual)

Hose Support Boom (Hyd.)



HOSE SUPPORT BOOM (MANUAL)

<u>Ref No.</u>	<u>Part No.</u>	<u>Description</u>	<u>FM3500</u>	<u>FM6500</u>
1	40159	Boom Vertical New Bearing Style	1	1
2	40106	Boom Horizontal Member	1	1
3	40108	Threaded Spring Guide	1	1
4	31110	3/4in Nut	2	2
5	31023	3/4in Flat Washer	2	2
6	31332	Boom Coil Spring	1	1
7	31025	1/2 x 3in Hex Bolt	1	1
8	31406	1/2in Lock Nut	2	2
9	31025	1/2 x 3in Hex Bolt	1	1
10	31140	Boom Chain	1	1
11	40112	Hose Support Band	1	1
12	31141	5/16 x 3-1/2in Hex Bolt	1	1
13	31004	5/16in Hex Nut	2	2
14	36299	Bearing, Flanged 1.50, 2-Bolt	2	2

HOSE SUPPORT BOOM (HYDRAULIC)

<u>Ref No.</u>	<u>Part No.</u>	<u>Description</u>	<u>FM3500</u>	<u>FM6500</u>
1	40132	Boom Member, Lower Hydraulic New Bearing Style	1	1
2	40128	Boom Member, Upper	1	1
3	61152	Cylinder Ram	1	1
4	61131	Hydraulic Adapter Fitting	1	1
5	61052	Hydraulic Hose, .375x123.00in	1	1
6	61129	Hydraulic Flow Regulator	1	1
7	31025	1/2 x 3" Hex Bolt	1	1
8	31406	Reverse Lock Nut, .500-13UNC	2	2
9	61131	Hydraulic Adapter Fitting	1	1
10	31140	Chain w/2 S-Hooks	1	1
11	40112	Band Assy, Hose Support, 18.00	1	1
12	31141	Hex Hd Bolt, 5/16 x 3.50	1	1
13	31004	Nut, Hex Finish ZP .313-18UNC	1	1
14	36299	Bearing, Flanged 1.50, 2-Bolt	2	2
15	61116	12V Hydraulic Power Unit	1	1
15a	61098	Plastic Hydraulic Tank	1	1
16	61156	Remote Control 3 Switch Box	1	1
17	61052	Hydraulic Hose, .375x123.00in	1	1
18	--	For Reference Purposes Only, Included in 61152	2	2
19	--	For Reference Purposes Only, Included in 61152	4	4