

GIANT-VAC®

Municipal

***ASSEMBLY INSTRUCTIONS
OPERATOR'S MANUAL
PARTS LIST***

Trailer Mount Truck Loaders



Actual product differs from product pictured above

Models covered:
TM66000JDT-HW
TM99000JDT-HW

Janiak Manufacturing, Inc.

Designer of the Original Giant-Vac®

GIANT-VAC Municipal

South Windham, CT 06266
Phone: 860-423-7741 • Fax: 860-423-2654

ASSEMBLY AND OPERATION INSTRUCTIONS FOR

GIANT-VAC™ MODELS TM6600JDT-HW & TM9900JDT-HW

As you unpack your Giant-Vac Truck Loader, you will find the following parts:

- 1 - Power unit with motor and impeller
- 1 - Ctn. with a nozzle, support band and lower boom
- 1 - Exhaust stack & elbow combination
- 1 - Intake hose - 18" diameter
- 1 - Exhaust hose - 12" diameter
- 1 - Upper boom
- 1 - Package of hardware with boom chain

Inspect parts for any damage that may have occurred in shipping. If found, save the packing box and **IMMEDIATELY** notify the transport carrier who delivered your machine. They are responsible for the damage and are the only ones to make any adjustments. Before leaving our plant, we hold all dimensions to close tolerances, thus, you will have little difficulty in assembling your Giant-Vac Truck Loader if you follow these steps.

CALIFORNIA PROPOSITION 65 WARNING

Gasoline and diesel engine exhaust and some of its constituents are known to the State of California to cause cancer, birth defects, and other reproductive harm.

As an owner of off-road gasoline or diesel engine equipment and/or as an employer, you also may have an obligation under the California Occupational Safety and Health Act or under Proposition 65 to warn persons exposed to diesel engine exhaust and /or other Proposition 65 chemicals in and around your workplace. See California Health and Safety Code section 25249.5, Title 22 of the California Code of Regulations at section 1200, *et seq.*, and Title 8 of the California Code of Regulations section 5194.

ASSEMBLY INSTRUCTIONS

ASSEMBLY:

Remove the draw bar, Ref. #1, from the hitch, turn it around so the pintle eye is facing outward. Re-bolt the draw bar into the hitch at the desired height and length. Remove and discard the shipping leg at this time, as it is only for shipping purposes. Lower the adjustable leg, Ref. #4, to work in conjunction with the support jack, Ref. #2, to level the machine. Bolt the exhaust stack and elbow combination, Ref. #5, onto the top of the blower housing, using three 1/2 x 4 1/2" hex bolts, flat washers, lock washers and nuts. Position this so the boom holder brackets put the boom, when installed, over the intake flange. Secure the metal exhaust hose, Ref. #4 to the round end of the elbow with the squeeze ring. Tighten the bolts to hold the hose in place. Attach the upper boom to the lower boom, using a 1/2 x 3" hex bolt and locknut. Then, attach the spring guide to the upper boom, using a 1/2 x 3" hex bolt and locknut. Remove the 3/4" nut and flat washer from the bottom of the spring guide and insert the rod into the bottom hole on the lower boom, securing with the hardware previously removed. Install the boom assembly into the boom brackets on the stack. Do this by sliding the vertical arm into the upper bracket and then slipping the arm down into the lower bracket. Slip the intake hose over the nozzle and secure with two hose clamps. Then slip the other end of the hose over the intake flange on the housing and secure with two hose clamps. Place the support band around the intake hose, approximately half way from the end, and secure with a 5/16 x 3 1/2" hex bolt and two nuts. Attach one end of the chain to the far end of the upper boom and the pass the other end through the loop in the support band. Adjust the height of the hose by where you put this end of the chain.

CONNECTING TO THE TRUCK:

Your Giant-Vac truck loader is very versatile. It tows readily by a truck. CHECK WITH YOUR STATE AND TOWN ORDINANCES FOR TOWING RULES, REGULATIONS AND SAFETY STANDARDS.

WHEN TRANSPORTING THE TRUCK LOADER, DO NOT EXCEED 30 M.P.H. HIGH SPEED DRIVING AND POOR ROAD CONDITIONS CAN CAUSE DAMAGE TO THE TRUCK LOADER AND THE PICK UP TRUCK.

DEBRIS BOXES:

To begin with, it is *extremely important* to have an adequate screen for allowing air to escape. We strongly recommend covering the entire top of the box with screening. One inch expanded mesh or 1/4" square mesh makes an excellent screen. The collection box is generally fabricated out of plywood and angle iron. A 3" angle iron frame is first fabricated. Then the sides are lined with 3/4" thick exterior type plywood. Make a frame for the top and then cover the frame with metal screening. If using a dump truck, remove the door. Fabricate a door from angle iron and plywood with a hinge on top. Do Not use any thinner plywood, as the internal pressure is apt to blow out the sides. Cut a 16" diameter hole in the door of the box, directly over the hitch and at the same height as the exhaust stack & elbow combination. Place a rubber gasket around this hole. A 14" inner tube makes an ideal gasket. The free end of the metal exhaust hose goes through this hole.

NEVER INSERT ANY BODY PART OR OTHER FOREIGN OBJECT IN ANY OPENING WHILE THE MACHINE IS RUNNING.

MOTOR INSTRUCTIONS:

You have received a complete engine manual with your machine. Be sure to especially note the instructions on **OILING**. *ALL MACHINES ARE SHIPPED WITHOUT OIL OR DIESEL FUEL UNLESS OTHERWISE NOTED.* If you have any difficulties with the engine, check the Yellow Pages of your phone book for the engine dealer nearest you, rather than us, as the engines are under their own manufacturer's warranty.

SAFETY AND OPERATING INSTRUCTIONS

TRAINING:

1. Regard your Giant-Vac as a piece of power equipment and teach this regard to all who will operate this unit.
2. **Never** allow children or young teenagers to operate the Giant-Vac.
3. Be sure you know how to stop the engine at a **MOMENT'S NOTICE**.
4. Instruct children to keep away from the area of operation at all times.

PREPARATION:

1. Before starting operation, clear the **entire** work area of all debris that could catch on or be thrown by the Truck Loader.
2. Unless there is very good artificial light, use **only** during daylight.
3. Fill diesel-fuel driven machines outdoors. Avoid spilling diesel fuel and **DO NOT** fill the engine while it is running or while you are smoking.

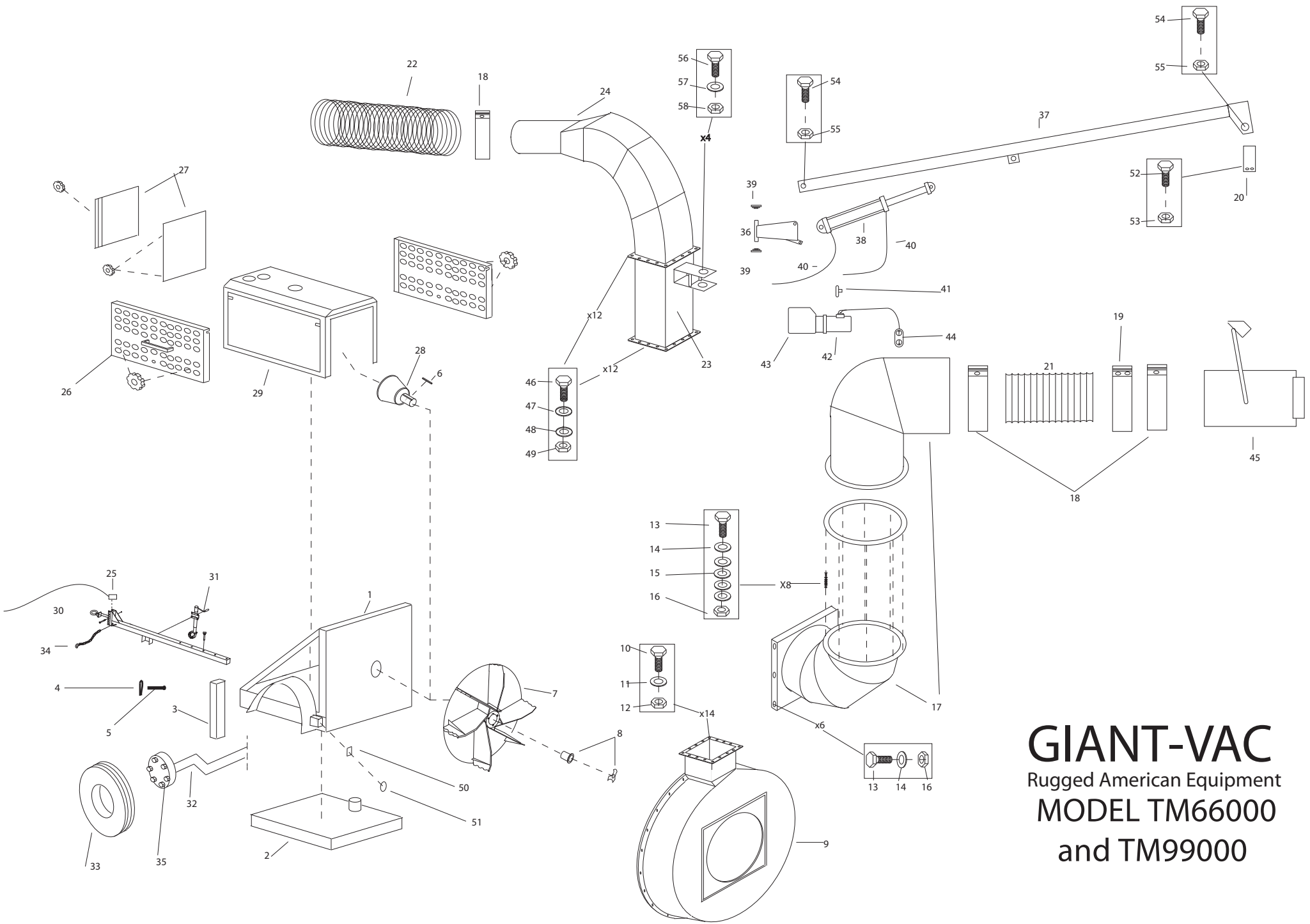
OPERATION:

1. **NEVER INSERT ANY BODY PART OR OTHER FOREIGN OBJECT IN ANY OPENING WHILE THE MACHINE IS RUNNING.**
2. **CAUTION: WHEN TRANSPORTING THE TRUCK LOADER, DO NOT EXCEED 30 M.P.H. HIGH SPEED DRIVING AND POOR ROAD CONDITIONS CAN CAUSE DAMAGE TO THE TRUCK LOADER AND THE TOW VEHICLE. MAKE SURE THE HOSE AND BOOM ARE SECURED BEFORE TOWING YOUR TRUCK LOADER.**
3. Do **not** operate with any guards or component parts removed from unit.
4. Before making any adjustments or repairs, **stop engine** and remove spark plug wire.
5. While in operation, **keep all parts of body** away from intake and exhaust sections.
6. When operating machine, keep people and pets a safe distance away.
7. Before starting, be certain to check the engine's **OIL AND DIESEL FUEL**. (See engine manufacturer's Service Manual.) **NEVER** check the engine while engine is running or while you are smoking. Check **ONLY** when engine is cold.
8. Before starting the engine, be certain to **completely** assemble the unit. With your right hand, set the throttle control to the "on" position. When the engine is cold, you might have to initially choke the engine. (The choke lever is next to the carburetor.) Next, make sure the battery is charged and both battery cables are properly connected. Turn the ignition key to "START" and the engine should start. After the engine starts, move the throttle lever down to approximately halfway.
9. After the machine is running, check the adjustment of the chain on the hose support. This is **vitaly important** for ease of operation. To make this check, speed up the engine. You should then be able to push the nozzle to the ground and pull it back up by using three fingers of one hand. If you can not operate the nozzle accordingly, either the chain should be readjusted or the spring tension of the boom assembly changed.
10. We recommend the following for efficient use of the truck loader: If the leaves are dry, run the machine at approximately half throttle. This will help reduce the amount of small particles of debris escaping through the exhaust screen. When the leaves are wet or partially frozen, run the machine at full throttle.

11. The Truck Loader is designed to be used in conjunction with a truck that has a receiver box installed. Be sure the receiver box is of adequate construction to withstand the high velocity and force of the incoming debris. **NEVER** run or operate your Truck Loader unless it is completely connected to a receiver box and the intake hose is installed.
12. **NEVER** allow a person to ride, sit or stand on the Truck Loader. **NEVER** allow a person to ride, sit or stand on the towing vehicle other than in the driver's cab of the towing vehicle.
13. Make sure that the driver of the towing vehicle has the operator of the Truck Loader in **full view at all times**. Also, when operating the Truck Loader, instruct the operator to stay to the side of the machine, **never** in front or behind.
14. To uncouple the machine, either to empty the box or when finished using it, **first** lower the rear support leg. Next, crank down the forward jack. Now uncouple the machine from the truck. Perform the reverse to couple the machine to the truck. Quite often a "U" bracket is used to support and guide the flexible metal hose into the hole in the debris box.

MAINTENANCE AND STORAGE:

1. Follow **implicitly** the engine manufacturer's recommendations for maintenance and storage.
2. **Never** adjust the Truck Loader or change attachments until the engine is off and the spark plug wire disconnected.
3. If carburetor adjustment is necessary, stand to one side and **keep feet and hands** in the clear while making adjustments.
4. Keep engine free from accumulations of grass, leaves or excessive grease. An accumulation of these combustible materials may result in a fire.
5. Store diesel fuel in a **safe and approved** container in a cool dry place.
6. Keep the Truck Loader and fuel container in **locked** storage to prevent children from playing and/or tampering with them.
7. DO NOT store diesel powered equipment or diesel fuel containers in a basement or any closed area where heating or heat appliances or open pilot lights are present, unless the fuel is completely drained from the power equipment and the fuel containers.



GIANT-VAC
 Rugged American Equipment
MODEL TM66000
 and **TM99000**

POWER UNIT, EXHAUST AND HYDRAULIC BOOM

<u>Ref No.</u>	<u>Part No.</u>	<u>Description</u>	<u>66000</u>	<u>99000</u>
1	10192	Engine Base (10190 Base Belt Drive)	1	1
2	40184	Fuel Tank (2009 EPA) (40181 Belt Drive)	1	1
3	40150	Adjustable Leg	1	1
4	31126	Spring Clip	2	2
5	31125	Pin 3/8 x 4in	2	2
6	31748	Impeller Key 1/2 x 5/8 x 5.00	1	1
7	21575	Impeller	1	1
8	31276	Impeller Bolt & Lock Washer 1-8 x 3	1	1
9	10177	Impeller Housing	1	1
10	31093	Hex Bolt 1/2 x 1	20	20
11	31078	Lock Washer 1/2	20	20
12	31022	Hex Nut 1/2	20	20
13	31005	Hex Bolt 5/16 x 1-1/4	8	8
14	31003	Lock Washer 5/16	8	8
15	31027	Flat Washer 5/16	32	32
16	31004	Hex Nut 5/16	8	8
17	20161	Intake Flange 16in 180 Degrees Rotating	1	1
18	40145	16in Hose Clamp	2	2
19	34092	Band, Hose Support, Special 16in	1	1
20	40144	Link, Hose Support Pivot Channel	1	1
21	34126	Heavy Duty Intake Hose 16" x 10' 3/8	1	1
22	34127	Heavy Duty Exhaust Hose 16" x 4' 3/8	1	1
23	24633	Stack Assembly	1	1
24	24649	Elbow Assembly w/Liners	1	1
25	70872	Breakaway Switch w/cable	1	1
26	27344	Removable Side Panel for 4-cyl JD 99hp Turbo Engine Shell	--	1
26	27374	Removable Side Panel for 4-cyl JD 84hp Turbo Engine Shell	1	--
26	27374	Removable Side Panel for 4-cyl JD 80hp Engine Shell	1	--
27	27373	Removable Radiator Screen for 4-cyl JD Turbo Engine	1	1
27	27373	Removable Radiator Screen for 4-cyl JD Engine	1	--
28	36190	PTO Assembly - 13 inch for 80/84hp	1	--
28	36134	PTO Assembly - 13 inch for 99hp	--	1
29	39161	Engine Shell Kit for 4-cyl John Deere 99hp Turbo Engine	--	1
29	39166	Engine Shell Kit for 4-cyl John Deere 84hp Turbo Engine	1	--
29	39166	Engine Shell Kit for 4-cyl John Deere 80hp Engine	1	--
30	38036	Draw Bar, Heavy Duty	1	1
31	33173	Support Jack	1	1
32	33207	Axle Assy 7,000lbs	1	1
33	33208	Tire & Rim, 700x15, 10 ply	2	2
34	33135	Chain, Safety S-Hook	2	2
35	31148	Lug Nut	12	12
36	40162	Boom Member, Lower	1	1
37	40163	Boom Member, Upper 5ft Long	1	1
38	61201	Cylinder Ram 6in	1	1
39	36299	Bearing, Flanged 1.50, 2-Bolt	2	2
40	61052	Hydraulic Hose, .375x123.00in	2	2
41	61129	Hydraulic Flow Regulator 3/8in	1	1
42	61116	Hydraulic Power Unit 12V	1	1
43	61098	Plastic Hydraulic Tank	1	1
44	61156	Remote Control 3-Wire Switch Box	1	1
45	20225	Intake Nozzle 16"	1	1

POWER UNIT, EXHAUST AND HYDRAULIC BOOM

<u>Ref No.</u>	<u>Part No.</u>	<u>Description</u>	<u>66000</u>	<u>99000</u>
46	31093	Hex Bolt 1/2 x 1	28	28
47	31078	Lock Washer 1/2	28	28
48	31022	Hex Nut 1/2	28	28
49	31043	Flat Washer 1/2	52	52
50	31639	Light Assy, Tail/Stop	2	2
51	31638	Grommet, Tail Light Mount Ring	2	2
52	31141	Hex Bolt 5/16 x 3-1/2	2	2
53	31009	Hex Nut 3/8	2	2
54	31929	Hex Bolt 5/8 x 3-1/2	2	2
55	31528	Hex Nut 5/8	2	2
56	31084	Hex Bolt 1/2 x 1-1/4	4	4
57	31078	Lock Washer 1/2	4	4
58	31022	Hex Nut 1/2	4	4

ITEMS NOT SHOWN

40173	Cap, Fuel (2009 EPA)	1	1
39021	Battery	1	1
39101	Battery Box	1	1
39027	84hp John Deere Tier III Turbo Diesel Engine w/13in FW	1	--
39066	99hp John Deere Tier III Turbo Diesel Engine w/13in FW	--	1
40123	Fuel Tank Strap	1	1
39243	Elbow, Exhaust 4in 90-Degrees	1	1
39244	Clamp, Muffler 4in	1	1
61084	Bracket, Remote Switch Mount	1	1
31831	Wiring Harness	1	1
31626	Knob, Plastic	7	7
70815	Fenders	2	2
32205	Kit, PTO Engage Damper	1	1
23169	Handle, PTO Clutch	1	1
23173	Handle with Damper Bracket Extension	1	1
31667	Nut Plate used with Belt Drive	1	1
31751	Light Assy, Marker Plate	1	1
31752	Bracket, License Plate	1	1
70855	Replaceable, Wear Liner w/Hardware	1	1

BELT DRIVE OPTION NOT SHOWN

36265	Belts, C-Type	5	5
36263	Bushing	2	2
36262	Bearing, 2.25	2	2
36261	Shaft, Impeller Belt Drive	1	1
36229	Pulley, 5C70	2	2
31711	Collar, Double 2.25	2	2
31128	Key, .500	1	1
31712	Key, .625/.500	1	1

WARRANTY REGISTRATION

SOLD TO: _____

DEALER: _____

Giant-Vac MODEL: _____

SERIAL #: _____

ENGINE MODEL: _____

SERIAL #: _____

PURCHASE DATE: _____

ORDER#: _____

MANUFACTURER: Janiak Manufacturing, Inc.
P.O. BOX 195
South Windham, CT 06266

DESCRIPTION:

Janiak Manufacturing Warranty

JANIAK MANUFACTURING, INC., here-in-after called Giant-Vac™ Municipal, warrants each new Giant-Vac™ Municipal machine to be the original retail purchaser of new Giant-Vac™ Municipal equipment to be free from manufacturing defects in normal service for a period of one (1) year unless it is used for rental purposes which limits the warranty to 30 days. This warranty does not apply to engines, tires or other parts that are manufactured and warranted by the manufacturer. Items such as bags, grass catchers, hoses and blades are not warranted as these are considered expendable items. This warranty does not include equipment failures due to normal wear.

An obligation under this warranty is expressly limited to the replacement or repair at an authorized servicing Giant-Vac™ Municipal dealer, or at a point designated by us, of such part or parts as shall appear to us to have been defective. All defective parts have to be returned freight prepaid before credit is issued.

We shall not be liable for transportation charges in connection with the replacement or repair of defective parts.

This warranty does not apply to a Giant-Vac™ Municipal machine upon which repairs or alterations have been made by others except with our prior written approval.

We shall not be liable for consequential damages or contingent liabilities nor for the fitness of any Giant-Vac™ Municipal machine for any particular purpose.

We make no other express, implied or statutory warranty, nor is anyone authorized to make any in our behalf.

Engines are a separate warranty:

John Deere – Two (2) year warranty direct from John Deere
Wisconsin – One (1) year warranty direct from Wisconsin

WARRANTY

Janiak Manufacturing, Inc., here-in-after called Giant-Vac™ Municipal , will warrant each new Giant-Vac product to be free from manufacturing defects in normal service for a period of one (1) year for municipal use. This warranty extends only to the original purchaser of the product and cannot be transferred. This warranty does not apply to engines, tires or other items that are purchased by Giant-Vac and warranted by the manufacturer of such items. Items such as; bags, grass catchers, hoses and blades are not warranted, as these are considered expendable items. This warranty does not include equipment failures due to normal wear.

Any obligation under this warranty is expressly limited to the replacement or repair, at an authorized servicing Giant-Vac™ Municipal dealer, or at a point designated by us, of such parts as appears to us to have been defective. All defective parts have to be returned freight prepaid before credit will be issued.

We shall not be liable for transportation charges in connection with the replacement or repair of defective parts.

This warranty does not apply to a Giant-Vac™ upon which repairs or alterations have been made by others except with our prior written approval.

We shall not be liable for consequential damages or contingent liabilities for the fitness of any Giant-Vac™ for any particular purpose.

We make no other express, implied or statutory warranty, nor is anyone authorized to make any in our behalf.

Engines are a separate warranty (Claims for parts, labor and mileage are to be filed directly with Engine Manufacturer/Local Dealer not Janiak Manufacturing):

Wisconsin – One (1) year warranty direct from Wisconsin

John Deere – Two (2) year warranty direct from John Deere

Janiak Manufacturing, Inc.

P.O. BOX 195
SOUTH WINDHAM, CT. 06266
PHONE: 860-423-7741 • FAX: 860-423-2654