

GIANT-VAC[®]

Municipal

ASSEMBLY INSTRUCTIONS
SAFETY RULES
PARTS LIST

Self-Contained Truck Loaders



Actual product differs from product pictured above

Models covered:
4910TR

Revised Jan 08

Janiak Manufacturing, Inc.

Designer of the Original Giant-Vac®

GIANT-VAC Municipal

South Windham, CT 06266
Phone: 860-423-7741 • Fax: 860-423-2654

ASSEMBLY AND OPERATION INSTRUCTIONS FOR

GIANT-VAC™ MODEL 4910TR

Congratulations!

You have just purchased one of the finest pieces of outdoor power equipment on the market today. If properly cared for, your Giant-Vac Model 4910TR Self-Contained Truck Loader will provide years of dependable service. Please read and follow this instruction manual carefully in order to get the most out of your new equipment.

First, inspect your machine upon delivery. Each Giant-Vac product leaves our factory in excellent condition; occasionally, however, some damage may occur during shipment. If any such damage is found upon initial inspection, *immediately* notify the transport carrier who delivered your machine, as they are solely responsible for the damage as well as any subsequent adjustments.

Your Giant-Vac Model 4910TR Self-Contained Truck Loader comes completely assembled. Simply follow the instructions contained within this manual to begin enjoying the benefits of your new unit.

CALIFORNIA PROPOSITION 65 WARNING

Gasoline and Diesel engine exhaust and some of its constituents are known to the State of California to cause cancer, birth defects and other reproductive harm.

As an owner of off-road gasoline or diesel engine equipment and/or as an employer, you also may have an obligation under the California Occupational Safety and Health Act or under Proposition 65 to warn persons exposed to gas and diesel engine exhaust and/or other Proposition 65 chemicals in and around your workplace. See California Health and Safety Code section 25249.5, Title 22 of the California Code of Regulations at Section 1200 *et seq.*, and Title 8 of the California Code of Regulations Section 5194.

1

SAFETY RULES REGARDING OUTDOOR POWER EQUIPMENT

IMPORTANT! READ THE FOLLOWING SAFETY RULES CAREFULLY BEFORE OPERATING UNIT:

- Regard your Giant-Vac Model 4910TR Self-Contained Truck Loader as a piece of power equipment and teach this regard to all who will operate this unit. Never allow children or young teenagers to operate the unit.
- Always wear appropriate safety equipment when operating this unit. Proper eye, ear, and breathing protection are a must.
- Be sure you know how to stop both the unit and the engine at a **MOMENT'S NOTICE**. Refer to the operation section of this manual, as well as the engine manual.
- Do not operate with any guards or component parts removed from unit.
- Unless there is very good artificial light, use only during daylight.
- Fill gasoline driven machines outdoors. Avoid spilling gasoline and **DO NOT** fill the engine while it is running or while you are smoking.
- While in operation, keep all parts of body away from intake and exhaust sections. Never insert any body part or other foreign object in any opening while the machine is running.
- Never operate the unit with the back door open or unlocked.
- When operating unit, keep people and pets a safe distance away. Instruct children to keep away from the area of operation at all times.
- Do not use on steep inclines (over 30 degrees), as unit can roll over.
- Before making any adjustments or repairs, stop engine and remove spark plug wire.
- Never allow another person to ride, sit or stand on the Giant-Vac Truck Loader.

FAILURE TO FOLLOW THESE RULES CAN RESULT IN CHRONIC HEALTH PROBLEMS, SERIOUS INJURY, OR EVEN DEATH.

2

UNIT OPERATION

1. ASSEMBLY:

The boom holders are located on the side of the exhaust stack and elbow (ref #34). Next the boom should be installed in the holders by sliding the vertical arm into the upper bracket on the exhaust stack and elbow and then dropping down into the lower bracket. The outrigger arm is next installed and fastened with a ½" bolt and lock nuts. The threaded support spring arm is fastened which completes this assembly.

2. HOSE ASSEMBLY AND POSITIONING:

Install the hose next and secure to the flange by means of a stainless steel hose clamp. Then slip the boom hose support over the hose. This should be secured about two (2) feet from the end of the hose. The pickup nozzle is installed next and fastened with a second hose clamp.

A chain connects the hose support band to the end of the boom. It is vitally important that this chain is adjusted correctly for ease of operation. In general, the chain should be so adjusted that the nozzle is approximately 16 inches off the ground.

The ultimate check to be certain this adjustment is correct takes place after the machine is running at operating speed. To make this check, speed up the engine. You should then be able to push the nozzle to the ground and pull it back up by using three fingers of one hand. If you cannot operate the nozzle accordingly, either the chain should be readjusted or the spring tension of the boom assembly changed. Taking a few minutes to adjust this correctly will ensure ease in operation.

For transport, move the intake hose forward and lock the intake nozzle handle to the nozzle holder for transport.

Attach the spring holders to the rear door (facing out or to the back of the machine) with 3/8" bolt, nut and lock washer. Next, connect the door spring and chain from the spring holder to the chain holder on the top of the machine. Repeat for the other side.

3. Engine:

NOTE: *If you experience problems with your engine that cannot be satisfactorily resolved by following the instructions contained within the engine manual, contact your local engine dealer, or call the toll-free service number listed in the repair section of the engine manual. All engine service, warranty or otherwise, is required to be performed by a manufacturer-authorized service center. Giant-Vac Mfg., Inc. is neither authorized nor responsible for any type of warranty engine service, nor is it equipped to perform any such service.*

BEFORE STARTING ENGINE:

- Be sure to read your engine manual carefully and thoroughly before attempting to start the engine.
- Be sure that the unit is **completely** assembled, and all safety guards and components are in place.
- Be sure to check engine's **oil** and **diesel***. (See engine manual for recommended oil and gasoline specifications.) **Never** check the engine while it is running or while you are smoking. Check only when engine is cold.

*All machines are shipped without oil or diesel unless otherwise noted.

- Be sure that red fuel valve on engine is set to open position.

TO START ENGINE:

- Set throttle control up to "full" position. If engine is cold, set choke by pulling out choke handle.
- Turn ignition key and hold until engine starts. (If engine fails to start within a reasonable amount of time, discontinue and check engine manual for further instructions.)
- After engine starts, release ignition key, move throttle control down to approximately half, and turn off choke as required.

TO SHUT ENGINE DOWN:

- Allow engine to idle for 2-3 minutes before shutting down.
- Turn ignition key to 'off' position.
- If engine is not to be started for a prolonged period, turn red fuel valve to closed position.

4. OPERATING THE UNIT:

1. **NOTE: ENGINE IS SHIPPED WITHOUT OIL** Follow the engine manufacturers recommendations for oil and fuel recommendations and service. This should be read carefully to ensure maximum engine life.
2. Be certain the intake hose boom is properly adjusted according to the instructions found in an earlier section of this manual. In operation, you will note the boom will readily swing over a 10-foot path. If the pile of leaves is high, a short back and forth flicking motion will effectively eat into the pile of leaves. If the leaves are wet, it is best to move into the pile with a "gulping" motion. In this way, you will pick up a quantity and then move the hose slightly away from the pile to allow the leaves to rapidly flush through.

3. In most cases, if the leaves are dry, we recommend running the truck loader at approximately half throttle. This will help reduce small particles of debris from escaping through the exhaust screen. When the leaves are wet or partially frozen, we recommend running the machine at full throttle.
4. **NEVER USE YOUR GIANT-VAC TRUCK LOADER TO PICK UP SAND OR STONES.** Debris like this is very abrasive and can damage the impeller and blower housing.
5. When the receiver box is full, stop the engine and move the intake hose nozzle forward and lock for transport. The machine is now ready to go to the dump.
6. Never run or operate your Giant-Vac Truck Loader unless it is completely connected to the receiver box and the intake hose is installed.

DUMPING THE LEAF BOX:

Your Giant-Vac Model 4910TR Self-Contained Truck Loader has a 10 cubic yard* self-dumping leaf box. When the box is full, simply back the unit up to the desired dumping area **, loosen the two handle nuts on either side of the back door, swing the two pivot lock bolts out of the way, lift the spring-loaded back door, and the debris will slide out. If necessary, pull the unit forward a few feet to ensure complete emptying of the box. Be sure to close and lock the door before resuming operation.

* Approximate holding capacity

** **Before backing up, always make a visual assessment of the area behind the Trail-Vac, making sure there are no people (especially children) or objects behind the machine that could be backed into or run over. Failure to do so could result in serious injury, as well as severe machine and/or property damage.**

3

MAINTENANCE AND STORAGE

- Follow **implicitly** the engine manufacturer's recommendations for maintenance.
 - Never make any adjustments to the Truck Loader until the engine is **off** and the spark plug wire is disconnected.
 - If carburetor adjustment is necessary, stand to one side and **keep feet and hands** in the clear while making adjustments.
 - Keep engine free of accumulations of grass, leaves or excessive grease. An accumulation of these combustible materials may result in a fire.
 - Store gasoline in a **safe and approved** container in a cool dry place.
 - Keep the Trail-Vac and fuel container in locked storage to prevent children from playing and/or tampering with them.
 - Do not store gasoline powered equipment or fuel containers in a basement or any closed area where heating or heat appliances or open pilot lights are present, unless the fuel is completely drained from the power equipment and the fuel containers.
-

WARRANTY

Janiak Manufacturing, Inc., here-in-after called Giant-Vac™ Municipal , will warrant each new Giant-Vac product to be free from manufacturing defects in normal service for a period of one (1) year for municipal use. This warranty extends only to the original purchaser of the product and cannot be transferred. This warranty does not apply to engines, tires or other items that are purchased by Giant-Vac and warranted by the manufacturer of such items. Items such as; bags, grass catchers, hoses and blades are not warranted, as these are considered expendable items. This warranty does not include equipment failures due to normal wear.

Any obligation under this warranty is expressly limited to the replacement or repair, at an authorized servicing Giant-Vac™ Municipal dealer, or at a point designated by us, of such parts as appears to us to have been defective. All defective parts have to be returned freight prepaid before credit will be issued.

We shall not be liable for transportation charges in connection with the replacement or repair of defective parts.

This warranty does not apply to a Giant-Vac™ upon which repairs or alterations have been made by others except with our prior written approval.

We shall not be liable for consequential damages or contingent liabilities for the fitness of any Giant-Vac™ for any particular purpose.

We make no other express, implied or statutory warranty, nor is anyone authorized to make any in our behalf.

Engines are a separate warranty (Claims for parts, labor and mileage are to be filed directly with Engine Manufacturer/Local Dealer not Janiak Manufacturing):

Wisconsin – One (1) year warranty direct from Wisconsin

John Deere – Two (2) year warranty direct from John Deere

Janiak Manufacturing, Inc.

P.O. BOX 195
SOUTH WINDHAM, CT. 06266
PHONE: 860-423-7741 • FAX: 860-423-2654

WARRANTY REGISTRATION

SOLD TO: _____

DEALER: _____

Giant-Vac MODEL: _____

SERIAL #: _____

ENGINE MODEL: _____

SERIAL #: _____

PURCHASE DATE: _____

ORDER#: _____

MANUFACTURER: **Janiak Manufacturing, Inc.**
P.O. BOX 195
South Windham, CT 06266

DESCRIPTION:

Janiak Manufacturing Warranty

JANIAK MANUFACTURING, INC., here-in-after called Giant-Vac™ Municipal, warrants each new Giant-Vac™ Municipal machine to be the original retail purchaser of new Giant-Vac™ Municipal equipment to be free from manufacturing defects in normal service for a period of one (1) year unless it is used for rental purposes which limits the warranty to 30 days. This warranty does not apply to engines, tires or other parts that are manufactured and warranted by the manufacturer. Items such as bags, grass catchers, hoses and blades are not warranted as these are considered expendable items. This warranty does not include equipment failures due to normal wear.

An obligation under this warranty is expressly limited to the replacement or repair at an authorized servicing Giant-Vac™ Municipal dealer, or at a point designated by us, of such part or parts as shall appear to us to have been defective. All defective parts have to be returned freight prepaid before credit is issued.

We shall not be liable for transportation charges in connection with the replacement or repair of defective parts.

This warranty does not apply to a Giant-Vac™ Municipal machine upon which repairs or alterations have been made by others except with our prior written approval.

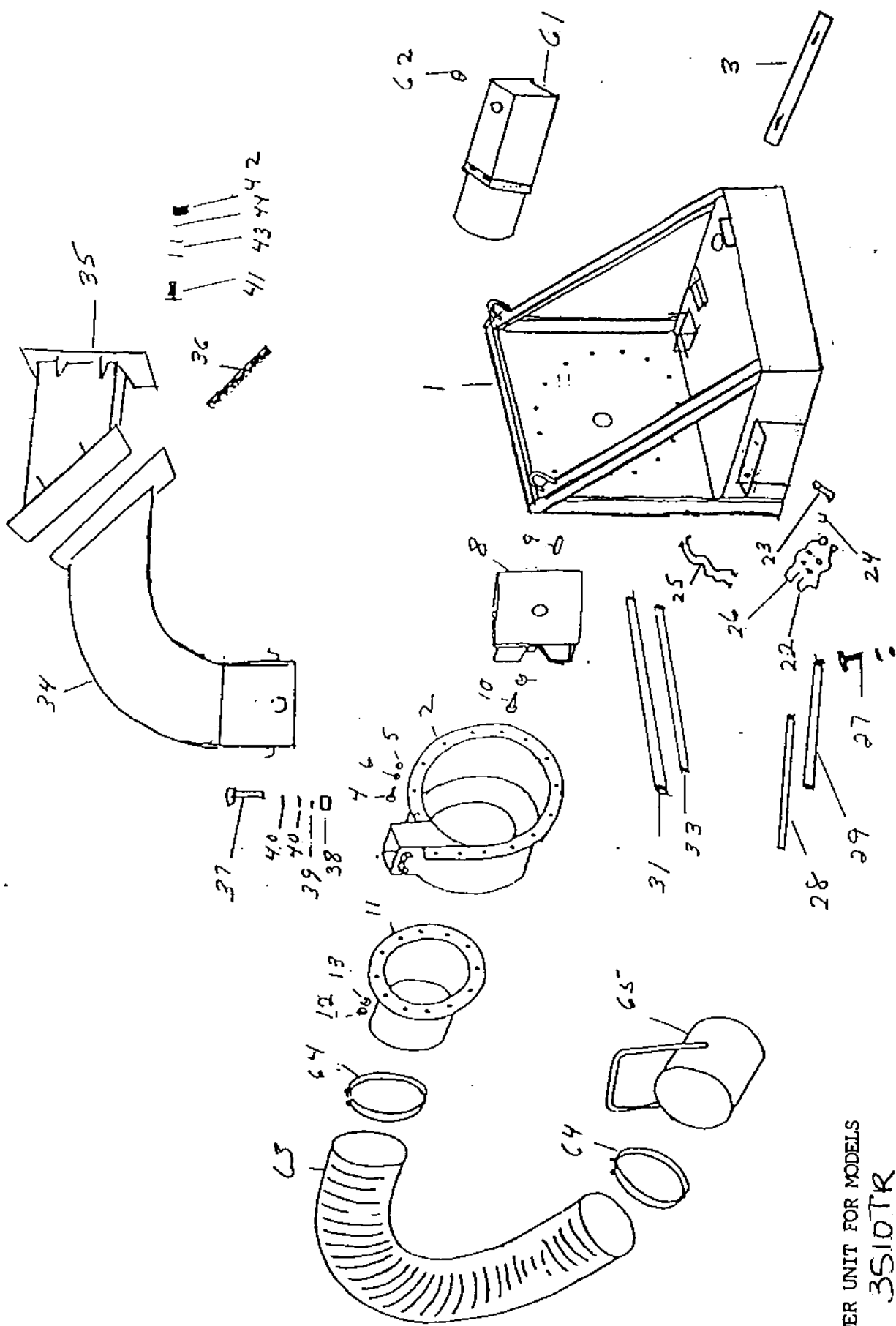
We shall not be liable for consequential damages or contingent liabilities nor for the fitness of any Giant-Vac™ Municipal machine for any particular purpose.

We make no other express, implied or statutory warranty, nor is anyone authorized to make any in our behalf.

Engines are a separate warranty: (claims to be filed directly with Engine Manufacturer/Distributor)

John Deere – Two (2) year warranty direct from John Deere

Wisconsin – One (1) year warranty direct from Wisconsin



POWER UNIT FOR MODELS
 3S10TR

POWER UNIT

| <u>REF. NO.</u> | <u>PART NO.</u> | <u>DESCRIPTION</u> | <u>4910</u> |
|----------------------------|----------------------------|---|--------------------|
| 1 | 10233 | Loader Base | 1 |
| 1a | 31740 | 1/2-13 x 2 Hex Bolt | 4 |
| 1b | 31043 | 1/2 Flat Washer | 8 |
| 1c | 31489 | 5/8 Flat Washer | 8 |
| 1d | 31078 | 1/2 Lock Washer | 4 |
| 1e | 31406 | 1/2 Lock Nut | 4 |
| 2 | 10220 | Blower Housing | 1 |
| 4 | 31033 | 3/8-16 x Hex Bolt | 13 |
| 5 | 31008 | 3/8 Lock Washer | 13 |
| 6 | 31009 | 3/8-16 Hex Nut | 13 |
| 8 | 21518 | Impeller | 1 |
| 9,10 | 31127 | Impeller Key | 1 |
| 9,10 | 31326 | 5/8 Lock Washer | 1 |
| 9,10 | 31327 | 5/8 x 2 Impeller Bolt | 1 |
| 11 | 20159 | Intake Flange 16" | 1 |
| 12 | 31022 | 1/2 Hex Nut | 12 |
| 13 | 31078 | 1/2 Lock Washer | 12 |
| 22 | 61044 | Valve Assembly | 1 |
| 23 | 23165 | Valve Handle | 2 |
| 24 | 27199 | Valve Handle Holder | 2 |
| 25 | 31518 | Wire Set Hydraulic Valve | 1 |
| 26 | 31519 | Replacement Micro Switch for Valve Assembly | 2 |
| 27 | 31195 | 1/4-20 x 1-1/4 Hex Bolt (Valve Assembly Mount) | 3 |
| 27a | 31013 | 1/4 Lock Washer | 3 |
| 27b | 31030 | 1/4-20 Hex Nut | 3 |
| 28 | 61045 | Hydraulic Hose 1/2 x 23 Valve to Jack | 1 |
| 29 | 61046 | Hydraulic Hose 1/2 x 43 Valve to Jack | 1 |
| 30 | 61073 | Hydraulic Fitting 2501LL-8-8 | 1 |
| 31 | 61048 | Hydraulic Hose 1/2 x 63 Valve to Hydraulic Power Unit | 1 |
| 32 | 61077 | Hydraulic Fitting 2501-8-8 | 1 |
| 32a | 61078 | Hydraulic Fitting 2404-8-8 | 1 |
| 33 | 61050 | Hydraulic Hose 1/2 x 49 Valve to Hydraulic Power Unit | 1 |
| 34 | 24635 | Stack & Elbow Assembly (With Wear Liner) | 1 |
| 35 | 24637 | Discharge Stack - Leaf Box Side | 1 |
| 36 | 31532 | Discharge Stack Gasket Set | 1 |
| 37 | 31086 | 1/2-13 x 1-3/4 Hex Bolt | 12 |
| 38 | 31022 | 1/2 Hex Nut | 12 |
| 39 | 31078 | 1/2 Lock Washer | 12 |
| 40 | 31043 | 1/2 Flat Washer | 24 |
| 41 | 31097 | 3/8-16 x 1-1/4 Hex Bolt | 8 |
| 42 | 31009 | 3/8-16 Hex Nut | 8 |
| 43 | 31034 | 3/8 Flat Washer | 16 |
| 44 | 31008 | 3/8 Lock Washer | 8 |
| 45 | 61017 | Hydraulic Cycliner 24" | 1 |
| 46 | 27196 | Cylinder Mounting Bracket | 1 |
| 47 | 27197 | Cylinder Clamp Bracket | 1 |
| 48 | 31522 | Cylinder Top Mounting Pin 1-1/4 x 7 | 1 |
| 48a | 31835 | 1-1/4 x 3/4 Spacer | 2 |
| 49 | 31523 | 1/2-13 x 1-1/4 Group | 1 |
| 49a | 31489 | 5/8 Flat Washer | 1 |

POWER UNIT (cont'd)

| <u>REF. NO.</u> | <u>PART NO.</u> | <u>DESCRIPTION</u> | <u>4910</u> |
|----------------------------|----------------------------|--|--------------------|
| 50 | 31524 | 3/8 x 2 Clevis Pin & Bridge Pin | 1 |
| 51 | 61074 | Hydraulic Fitting 2501-6-8 | 1 |
| 52 | 31525 | 1/2-13 x 5-1/2 Hex Bolt (Clamp Bolt) | 2 |
| 52a | 31078 | 1/2 Lock Washer | 2 |
| 53 | 31833 | 5/8-11 x 1-1/2 Hex Bolt | 4 |
| 54 | 31834 | 5/8 Flat Washer (D-Shape) | 4 |
| 54a | 31326 | 5/8 Lock Washer | 4 |
| 55 | 31528 | 5/8-11 Hex Nut | 4 |
| 56 | 31529 | Jack Foot Pin 1-1/4 x 5 | 1 |
| 58 | 27198 | Jack Foot | 1 |
| 59 | 31523 | 1/2-13 x 1-1/4 Group | 2 |
| 59a | 31489 | 5/8 Flat Washer | 2 |
| 60 | 33135 | Safety Chain (Set of 2) | 1 |
| 61 | 61079 | Hydraulic Power Unit | 1 |
| 61a | 31492 | 3/8-16 x 3/4 Hex Bolt (Power Unit Mounting Bolt) | 2 |
| 61b | 31033 | 3/8-16 x 1 Hex Bolt (Power Unit Mounting Bolt) | 2 |
| 61c | 31034 | 3/8 Flat Washer | 6 |
| 61d | 31008 | 3/8 Lock Washer | 4 |
| 61e | 31009 | 3/8-16 Hex Nut | 4 |
| 62 | 61080 | Breather Cap | 1 |
| 63 | 34022 | Intake Hose 16" x 7' | 1 |
| 64 | 34024 | Hose Clamp 16" | 4 |
| 65 | 20157 | Intake Nozzle 16" | 1 |

ITEMS NOT SHOWN

| | | |
|-------|---|----|
| 70788 | Replacement Housing Wear Liner (w/Hardware) | 1 |
| 71132 | Replacement Elbow Liner (w/Hardware) | 1 |
| 39064 | 49 HP John Deere Tier III Engine | 1 |
| 31097 | 3/8-16 x 1-1/4 Hex Bolt (Engine Mount Bolt) | 12 |
| 31034 | 3/8 Flat Washer | 24 |
| 31008 | 3/8 Lock Washer | 12 |
| 31009 | 3/8-16 Hex Nut | 12 |
| 40100 | Battery Box | 1 |
| 31097 | 3/8-16 x 1-1/4 Hex Bolt | 2 |
| 31008 | 3/8 Lock Washer | 2 |
| 31009 | 3/8-16 Hex Nut | 2 |
| 39021 | Battery | 1 |
| 31763 | Battery Cable 16S | 1 |
| 31818 | Battery Cable 42S | 1 |
| 31839 | Terminal Cover - Black | 1 |
| 31840 | Terminal Cover - Red | 1 |
| 40182 | Fuel Tank (2009 EPA) | 1 |
| 40173 | Fuel Cap (2009 EPA) | 1 |

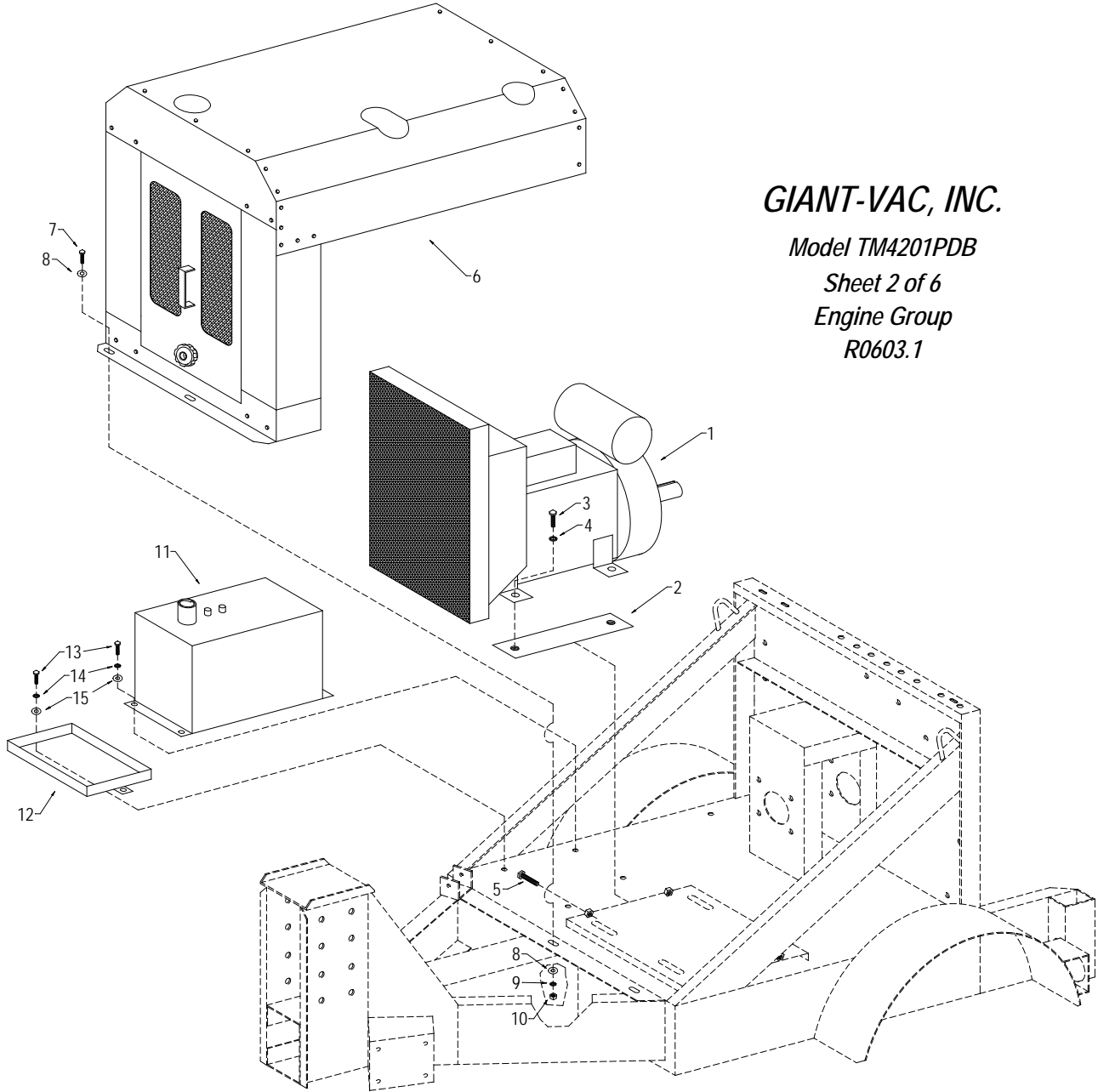
GIANT-VAC, INC.

Model TM4201PDB

Sheet 2 of 6

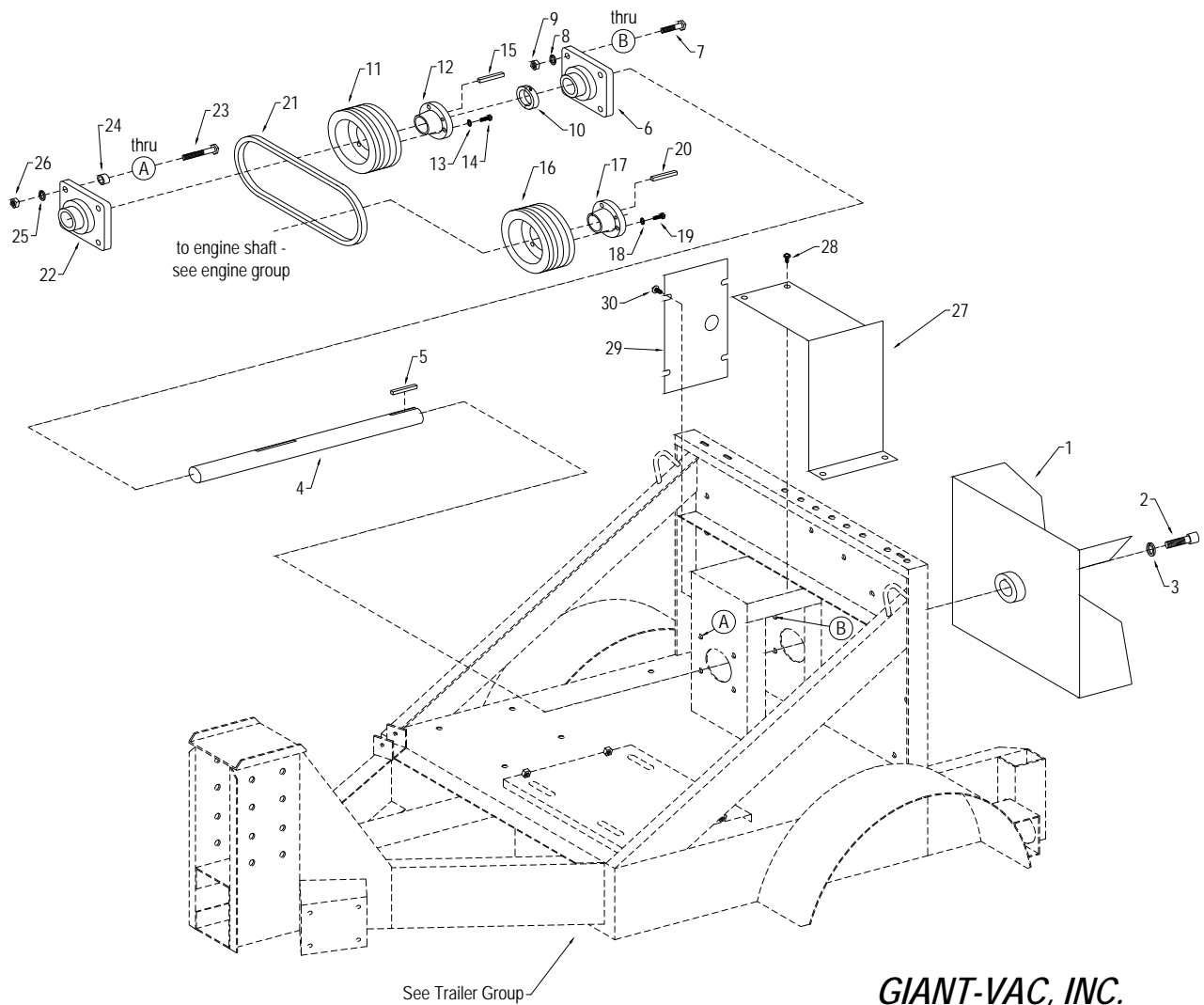
Engine Group

R0603.1



ENGINE GROUP

| <u>REF NO.</u> | <u>PART NO.</u> | <u>DESCRIPTION</u> | <u>4910</u> |
|----------------|-----------------|---|-------------|
| 1 | 39064 | Engine – 49hp John Deere Tier III Turbo Diesel | 1 |
| --- | 32037 | Hose, Oil Drain Extension | 1 |
| --- | 31761 | Plug, Drain – 1/4" ipt – caps end of oil drain extension hose | 1 |
| --- | 27398 | Box, Control Panel Mounting | 1 |
| --- | 27435 | Bracket, Mounting – control panel side | 1 |
| --- | 27434 | Bracket, Mounting – machine side | 1 |
| --- | 31033 | Bolt, Hex - 3/8-16 x 1" – bolts box to mounting brackets | 4 |
| --- | 31008 | Washer, Lock - 3/8 | 4 |
| --- | 31009 | Nut, Hex - 3/8-16 | 4 |
| 2 | 27397 | Engine Mount Nut Plate | 2 |
| 3 | 31147 | Bolt, Hex - 1/2-13 x 1-1/2" | 4 |
| 4 | 31078 | Washer, Lock - 1/2" | 4 |
| 5 | 31880 | Bolt, Engine Adjustment | 4 |
| 6 | 39100 | Engine Shroud - complete | 1 |
| 7 | 31033 | Bolt, Hex - 3/8-16 x 1" | 2 |
| 8 | 31034 | Washer, Flat – 3/8" | 2 |
| 9 | 31008 | Washer, Lock - 3/8" | 2 |
| 10 | 31009 | Nut, Hex - 3/8-16 | 2 |
| --- | 31031 | Bolt, Hex Head – 5/16-18 x 3/4" – mounts shroud rear to frame | 4 |
| --- | 31027 | Washer, Flat – 5/16" | 4 |
| --- | 31003 | Washer, Lock – 5/16" | 4 |
| --- | 31004 | Nut, hex – 5/16" | 4 |
| 11 | 40140 | Tank, Fuel | 1 |
| --- | 40114 | Cap, Fuel | 1 |
| --- | 31830 | Plug, Drain - 3/8" IPT | 1 |
| --- | 31828 | Fitting - 1/4" IPT to 1/4" Farrell | 1 |
| --- | 31829 | Fitting - 3/8" IPT to 5/16" Farrell | 1 |
| --- | 31753 | Line, Copper Fuel - 1/4" - 6" | 1 |
| --- | 31754 | Line, Copper Fuel - 5/16" - 14" | 1 |
| --- | 31755 | Hose, Rubber Fuel - 1/4" - 42" | 1 |
| --- | 31756 | Hose, Rubber Fuel - 5/16" - 6" | 1 |
| --- | 31756 | Hose, Rubber Fuel - 5/16" - 12" | 1 |
| --- | 34041 | Clamp, Hose - 1/2" | 6 |
| 12 | 40141 | Box, Battery Mounting | 1 |
| --- | 39021 | Battery | 1 |
| --- | 39101 | Battery Case | 1 |
| --- | 31826 | Battery Cable - positive - 48S | 1 |
| --- | 31763 | Battery Cable - ground - 16S | 1 |
| --- | 31838 | Cover, Battery terminal – red | 1 |
| --- | 31839 | Cover, Battery terminal - black | 1 |
| 13 | 31097 | Bolt, Hex - 3/8-16 x 1-1/4 | 2 |
| 14 | 31008 | Washer, Lock - 3/8 | 2 |
| 15 | 31034 | Washer, Flat - 3/8 | 2 |



GIANT-VAC, INC.

Model TM4201PDB

Sheet 3 of 6

Impeller Drive Group

R0603.1

IMPELLER DRIVE GROUP

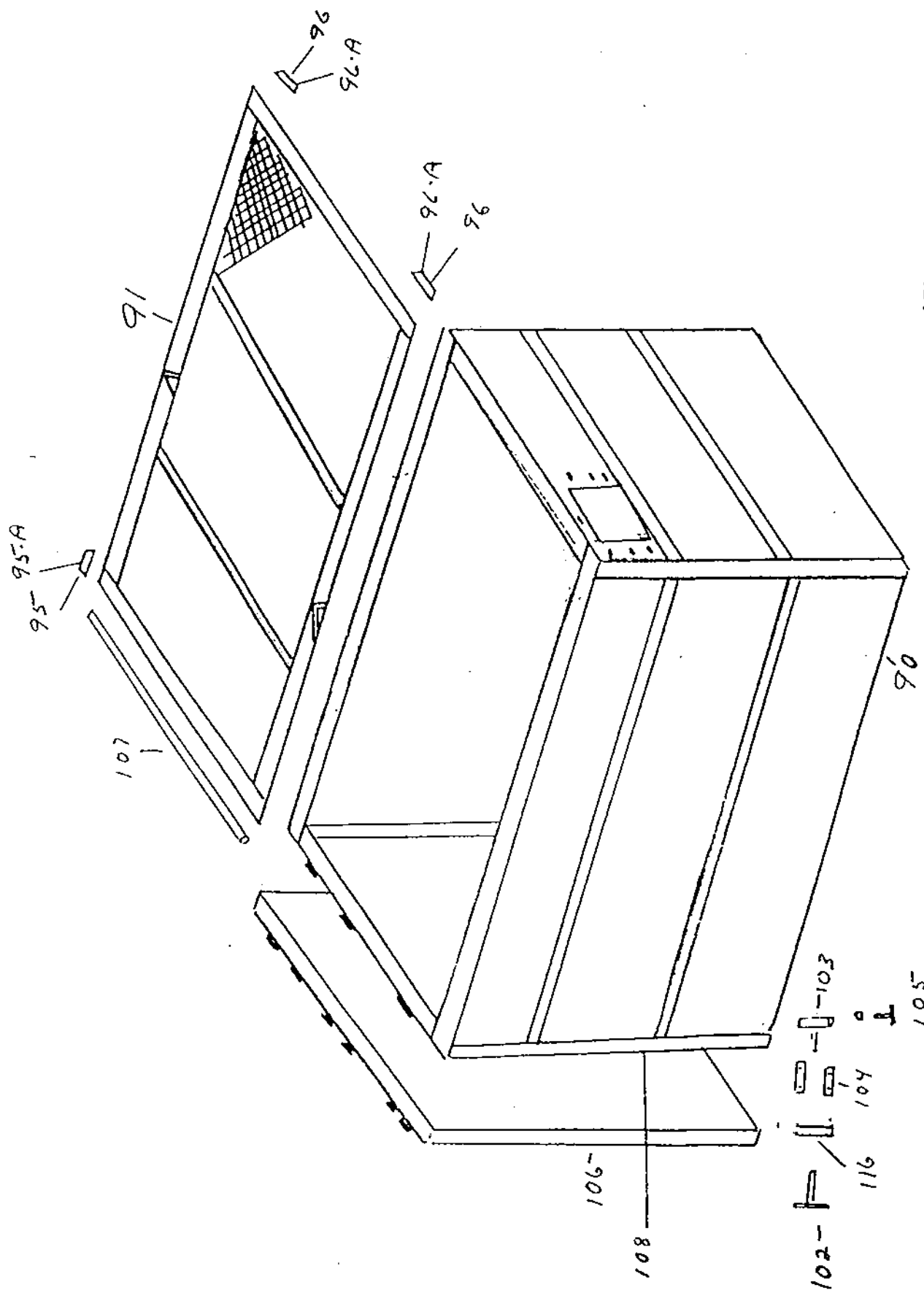
| <u>REF NO.</u> | <u>PART NO.</u> | <u>DESCRIPTION</u> | <u>4910</u> |
|----------------|-----------------|--|-------------|
| 1 | 21518 | Impeller | 1 |
| 2 | 31327 | Bolt, Impeller – 5/8-11 x 2 | 1 |
| 3 | 31326 | Washer, Lock - 5/8" | 1 |
| 4 | 36196 | Shaft, Impeller | 1 |
| 5 | 31127 | Key, Impeller | 1 |
| 6 | 36163 | Bearing Unit - 1-7/16 | 1 |
| 7 | 31147 | Bolt, Hex - 1/2-13 x 1-1/2" | 4 |
| 8 | 31078 | Washer, Lock - 1/2" | 4 |
| 9 | 31022 | Nut, Hex - 1/2-13 | 4 |
| 10 | 31711 | Collar, Split, 2 pc - 1-7/16 | 2 |
| 11 | 36296 | Pulley, Impeller Drive | 1 |
| 12 | 36340 | Bushing, Pulley - SKX1-7/16 | 1 |
| 13 | ----- | Washer, Lock – 5/16 – supplied with bushing | 3 |
| 14 | ----- | Bolt, Hex – 5/16-18 x 2" full thread – supplied with bushing | 3 |
| 15 | 31677 | Key, Shaft | 1 |
| 16 | 36296 | Pulley, Impeller Drive | 1 |
| 17 | 36341 | Bushing, Pulley - SKX1-3/4 | 1 |
| 18 | ----- | Washer, Lock – 5/16 – supplied with bushing | 3 |
| 19 | ----- | Bolt, Hex – 5/16-18 x 2" full thread – supplied with bushing | 3 |
| 20 | 31677 | Key, Shaft | 1 |
| 21 | 36334 | Belt, Impeller Drive - 3VX475 | 5 |
| 22 | 36163 | Bearing Unit - 1-7/16 | 1 |
| 23 | 31740 | Bolt, Hex - 1/2-13 x 2" | 4 |
| 24 | 31460 | Spacer - 1/2 id x 5/8 | 4 |
| 25 | 31078 | Washer, Lock - 1/2" | 4 |
| 26 | 31022 | Nut, Hex - 1/2-13 | 4 |
| 27 | 27400 | Cover, Drive Belt Top | 1 |
| 28 | 31660 | Bolt, 'F' Thread - 5/16 x 3/4 | 4 |
| 29 | 27399 | Cover, Drive Belt Side | 1 |
| 30 | 31660 | Bolt, 'F' Thread - 5/16 x 3/4 | 4 |

LEAF BOX AND FRAME

| <u>REF. NO.</u> | <u>PART NO.</u> | <u>DESCRIPTION</u> | <u>4910</u> |
|----------------------------|----------------------------|--|--------------------|
| 85 | 27389 | Trailer Frame | 1 |
| 86 | 33129 | Axle and Spring Assembly | 2 |
| 87 | 33125 | Tire & Rim Assembly | 4 |
| 88 | 33130 | Rim Lock | 20 |
| 89 | 33131 | Lug Nut | 20 |
| 90 | 27379 | Leaf Box - 10 Cubic Yard | 1 |
| 92 | 27191 | Hoist Box Bracket | 2 |
| 93 | 61112 | Hoist 10 Yard | 1 |
| 94 | 61052 | Hydraulic Hose 1/2 x 123 | 1 |
| 94a | 61054 | Hydraulic Hose 1/2 x 143 | 1 |
| 95 | 31499 | Running Light Assembly (Cat's Eye) Red | 7 |
| 95a | 31501 | Replacement Lins - Red | 7 |
| 96 | 31500 | Running Light Assembly (Cat's Eye) Amber | 4 |
| 96a | 31502 | Replacement Lins - amber | 4 |
| 97 | 33132 | Dust Cap | 4 |
| 98 | 33133 | Bearing Seal | 8 |
| 99 | 33134 | Bearing | 8 |
| 100 | 27192 | Hoist Trailer Bracket | 2 |
| 101 | 31503 | Hoist Pin | 1 |
| 102 | 31625 | 5/8-11 Handle Nut | 2 |
| 102a | 31489 | 5/8 Flat Washer | 2 |
| 103 | 31504 | Door Lock Pivot T-Bolt | 2 |
| 104 | 27195 | Door Lock Side Piece | 4 |
| 105 | 31335 | 1/2-13 x 4 Hex Bolt | 2 |
| 105 | 31021 | 1/2-13 x 4-1/2 Hex Bolt | 4 |
| 105a | 31406 | 1/2-13 Lock Nut | 6 |
| 106 | 27380 | Back Door | 1 |
| 107 | 23160 | Back Door Rod | 1 |
| 108 | 31506 | Door Gasket | 1 |
| 115 | 31639 | Stop & Tail Light Assembly | 2 |
| 115a | 31562 | #12 x 3/4 Self Tap Screw (Tail Light Grouding Screw) | 2 |
| 116 | 27200 | Door Latch Holder | 2 |

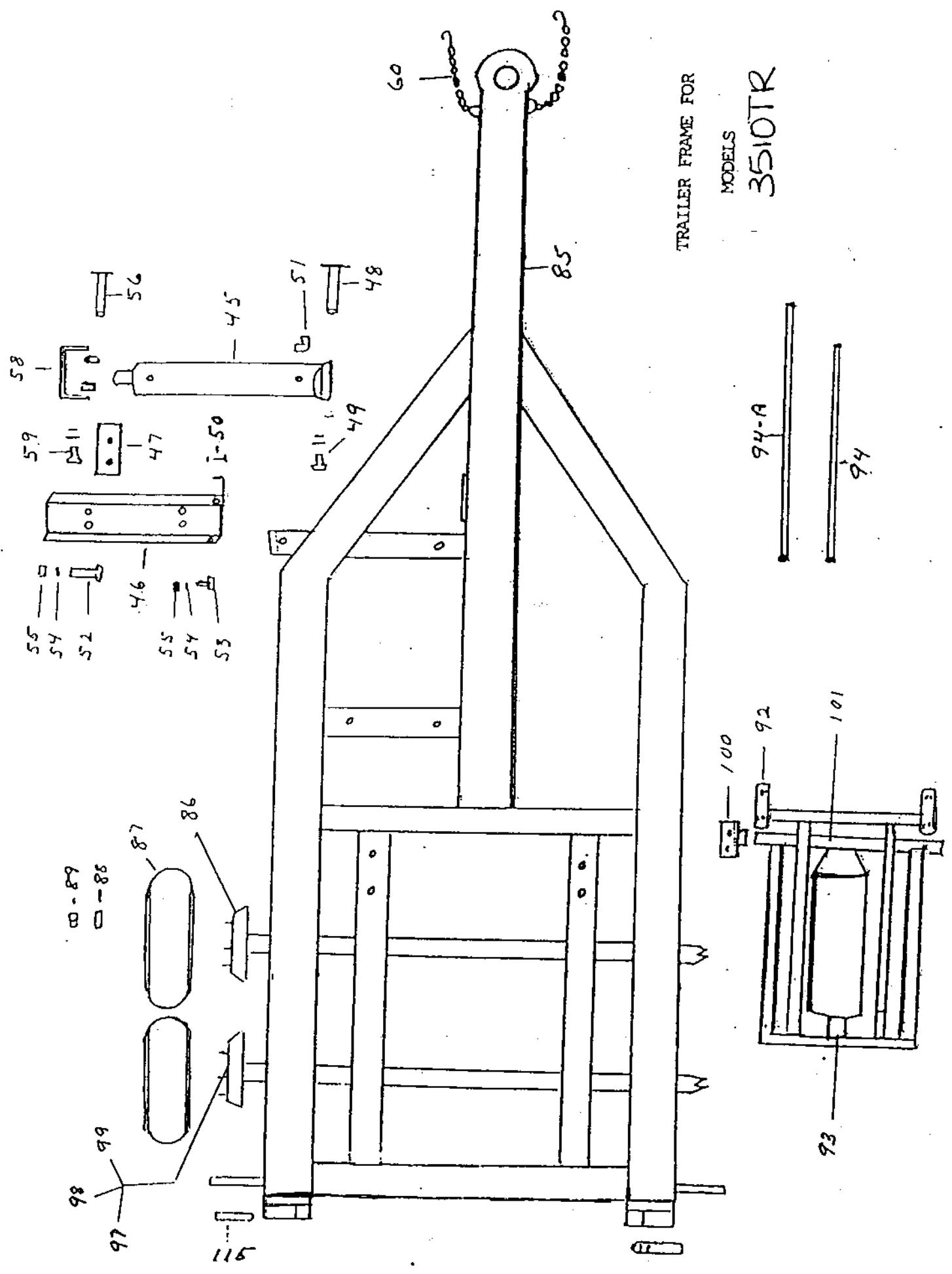
ITEMS NOT SHOWN

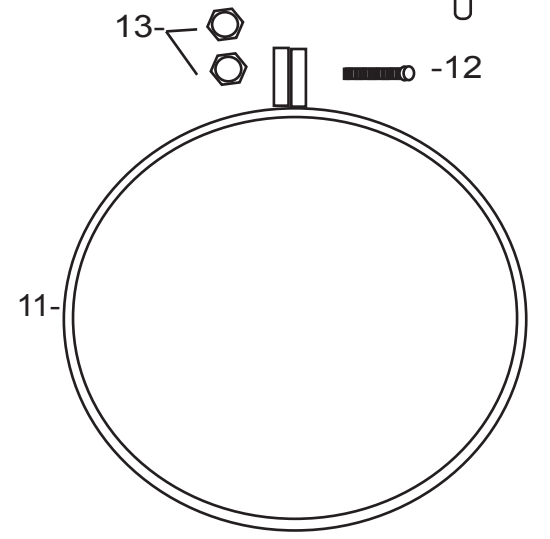
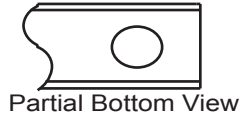
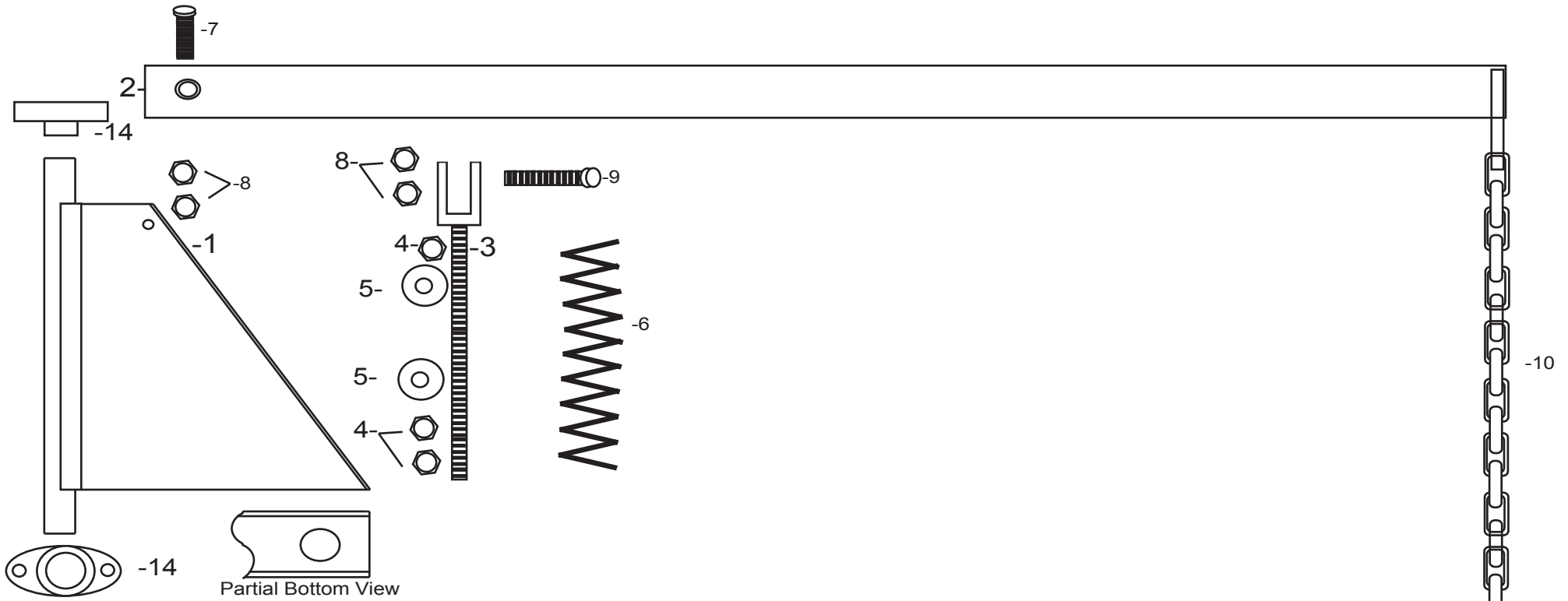
| | | |
|-------|--|----|
| 31842 | Wiring Harness - Trailer | 1 |
| 31845 | Wiring Harness - Top Screen (Running Lights) | 1 |
| 31751 | License Light Assembly | 1 |
| 31752 | License Plate Mounting Bracket | 1 |
| 31030 | 1/4-20 Hex Nut (License Light/Bracket Mounting Hardware) | 4 |
| 31013 | 1/4 Lock Washer | 2 |
| 31757 | Bolt-On Wiriing Harness Clip | 15 |
| 31013 | 1/4 Lock Washer | 15 |
| 31030 | 1/4-20 Hex Nut | 15 |
| 31849 | Plastic Cable Tip 28" | 2 |



LEAF BOX FOR MODELS
3510 TR

TRAILER FRAME FOR
 MODELS
 3510TR





GIANT-VAC[®]
 Hose Support Boom
 (Manual)

HOSE SUPPORT BOOM

| <u>Ref No.</u> | <u>Part No.</u> | <u>Description</u> | <u>4910</u> |
|----------------|-----------------|--|-------------|
| 1 | 40159 | Boom Vertical New Bearing Style | 1 |
| 2 | 40106 | Boom Horizontal Member | 1 |
| 3 | 40108 | Threaded Spring Guide | 1 |
| 4 | 31110 | Hex Nut 3/4 | 2 |
| 5 | 31023 | Flat Washer 3/4 | 2 |
| 6 | 31332 | Boom Coil Spring | 1 |
| 7 | 31025 | Hex Bolt 1/2 x 3 | 1 |
| 8 | 31406 | Lock Nut 1/2 | 2 |
| 9 | 31025 | Hex Bolt 1/2 x 3 | 1 |
| 10 | 31140 | Boom Chain | 1 |
| 11 | 40112 | Hose Support Band | 1 |
| 12 | 31141 | Hex Bolt 5/16 x 3-1/2 | 1 |
| 13 | 31004 | Hex Nut 5/16 | 2 |
| 14 | 36299 | Bearing, Flanged 1.50, 2-Bolt (Bearing Style Only) | 2 |